

WAAS CH <b>40322</b> <b>W21A</b>	APP CRS <b>211°</b>	Rwy Ldg TDZE Apt Elev	<b>5500</b> <b>1270</b> <b>1270</b>
--	------------------------	-----------------------------	---

# RNAV (GPS) RWY 21

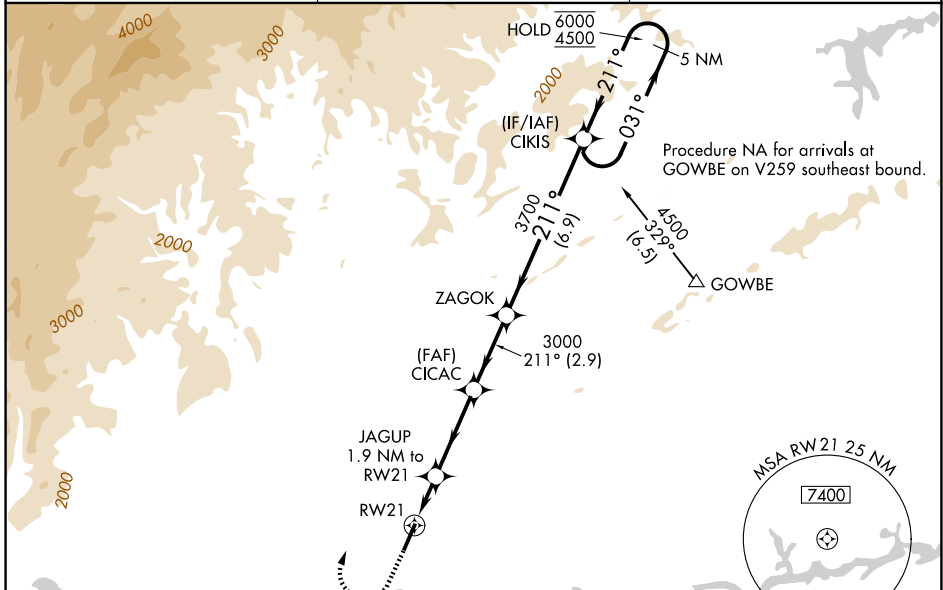
FOOTHILLS RGNL (MR.N)

RNP APCH - GPS.

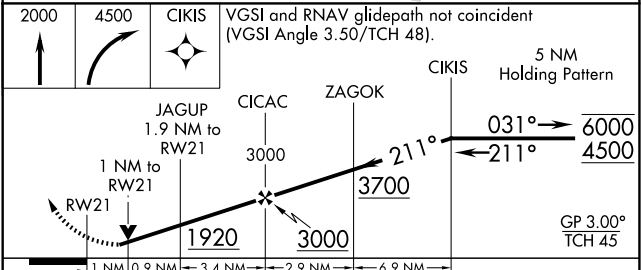
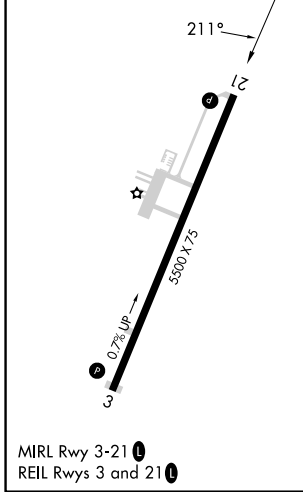
⚠ Baro-VNAV and VDP NA when using HKY altimeter setting. For uncompensated Baro-VNAV systems, LNAV/VNAV NA below -17°C or above 54°C. Rwy 21 helicopter visibility reduction below ¾ SM NA. When local altimeter not received, use HKY altimeter setting and increase LPV DA to 1562 feet; LNAV/VNAV DA to 1642 feet; increase all MDAs 60 feet and visibility LNAV Cats C and D and Circling Cat D ¼ SM.

⚠ MISSED APPROACH: Climb to 2000 then climbing right turn to 4500 direct CIKIS and hold.

AWOS-3P <b>124.175</b>	ATLANTA CENTER <b>125.15 263.0</b>	UNICOM <b>122.7 (CTAF) 0</b>
---------------------------	---------------------------------------	---------------------------------



ELEV 1270	TDZE 1270
-----------	-----------



CATEGORY	A	B	C	D
LPV DA		1520-1	250 (300-1)	
LNAV/VNAV DA		1600-1	330 (400-1)	
LNAV MDA	1680-1	410 (500-1)	1680-1½	410 (500-1½)
CIRCLING	1720-1 450 (500-1)	1760-1 490 (500-1)	1800-1½ 530 (600-1½)	2140-2¾ 870 (900-2¾)

SE-2, 14 MAY 2026 to 11 JUN 2026

SE-2, 14 MAY 2026 to 11 JUN 2026