

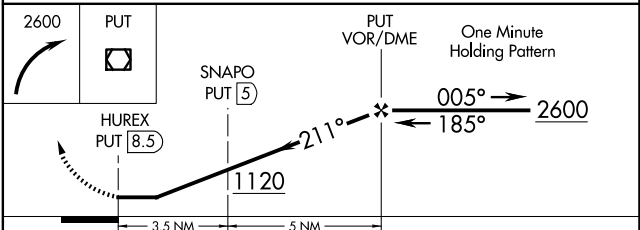
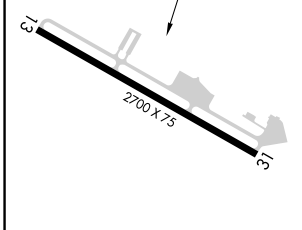
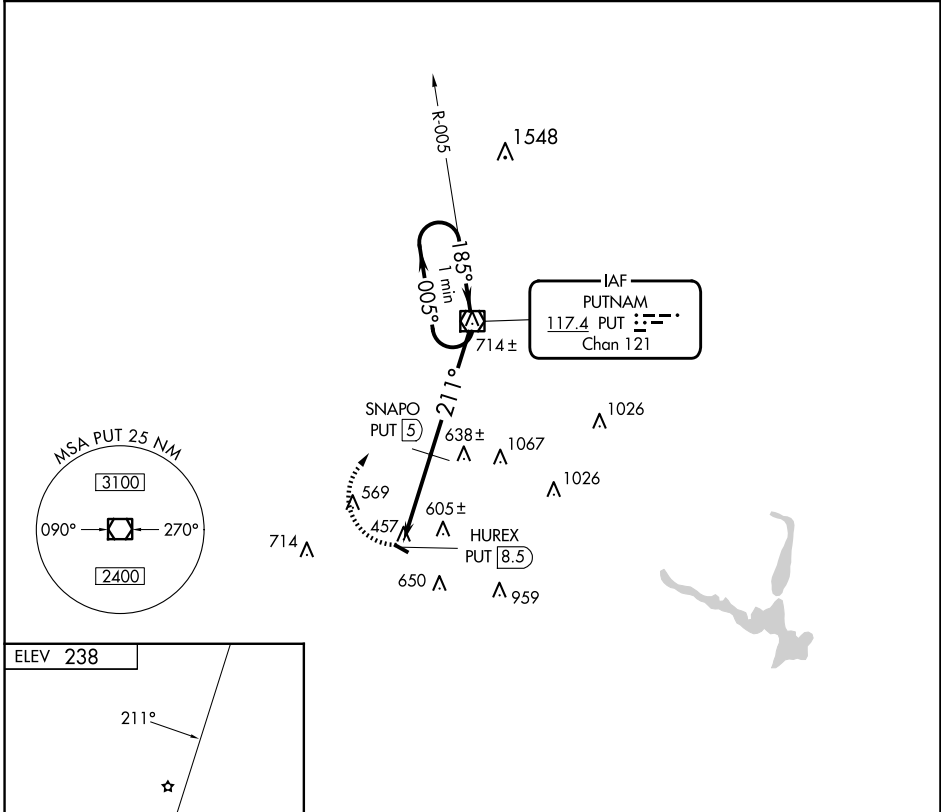
VOR/DME PUT 117.4 Chan 121	APP CRS 211°	Rwy ldg TDZE Apt Elev	N/A N/A 238
--	------------------------	-----------------------------	--

VOR-A
DANIELSON (LZD)

NA When local altimeter setting not received, use Willimantic altimeter setting and increase SNAPO fix minimums Cat B MDA 40 feet.
Procedure NA at night. Helicopter visibility reduction below 1 SM NA.

MISSED APPROACH: Climbing right turn to 2600 direct PUT VOR/DME and hold.

AWOS-3 119.125	UD ASOS 133.675	PROVIDENCE APP CON ★ 123.675 244.875	UNICOM 123.0 (CTAF)
--------------------------	---------------------------	--	-------------------------------



REIL Rwy 31					MIRL Rwy 13-31				
FAF to MAP 8.5 NM									
Knots	60	90	120	150	180				
Min:Sec	8:30	5:40	4:15	3:24	2:50				
CATEGORY									
A		B		C		D			
CIRCLING		1120-1¼		882 (900-1¼)		NA			
SNAPO FIX MINIMUMS									
CIRCLING		900-1		1080-1¼		NA			
		662 (700-1)		842 (900-1¼)					

NE-1, 14 MAY 2026 to 11 JUN 2026

NE-1, 14 MAY 2026 to 11 JUN 2026