

WAAS CH 97418	APP CRS 354°	Rwy Idg TDZE Apt Elev	5399 186 195
-------------------------	------------------------	-----------------------------	---

RNAV (GPS) RWY 35

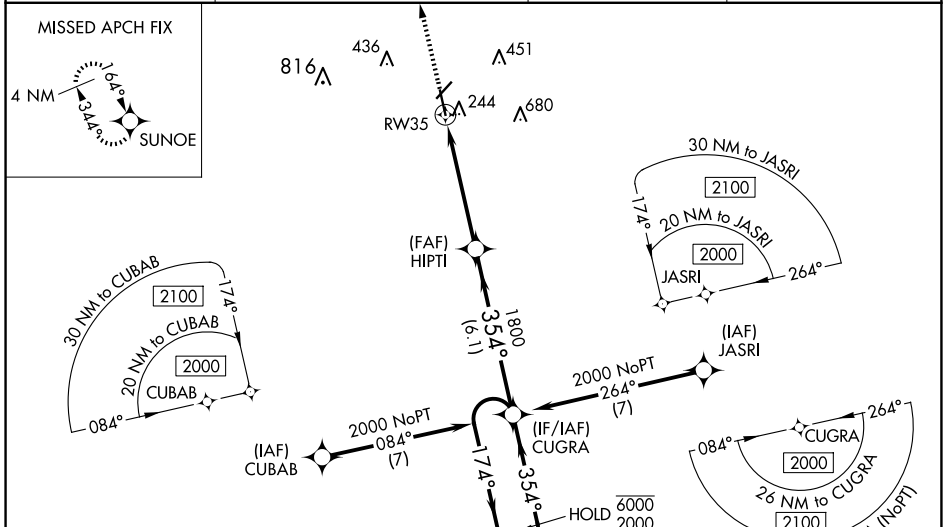
ORANGEBURG MUNI (OGB)

RNP APCH - GPS.

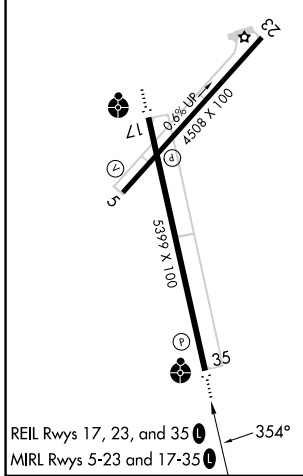
⚠ Circling Rwy 17 NA at night. Baro-VNAV and VDP NA when using Columbia Metro altimeter setting. For uncompensated Baro-VNAV systems, LNAV/VNAV NA below -4°C or above 54°C. Inop table does not apply to LPV. For inop ALS, increase LNAV/VNAV Cat A/B visibility to ½ SM and LNAV Cat C/D visibility to 1½ SM. When local altimeter setting not received, use Columbia Metro altimeter setting: increase LPV DA to 515 feet and all visibilities ½ SM; increase LNAV/VNAV DA to 559 feet and all visibilities ¼ SM; increase all MDAs 80 feet and visibility Cts C and D ¼ SM. For inop ALS when using Columbia Metro altimeter setting, increase LPV and LNAV/VNAV Cat A/B visibility to 1 SM.

ODALS MISSED APPROACH: Climb to 2000 direct SUNOE and hold.

ASOS 118.525	COLUMBIA APP CON 124.15 338.2	GCO 125.675	UNICOM 122.7 (CTAF) 0
------------------------	---	-----------------------	---------------------------------



ELEV 195	TDZE 186
----------	----------



CATEGORY	A	B	C	D
LPV DA		436- $\frac{3}{4}$	250 (300- $\frac{3}{4}$)	
LNAV/VNAV DA		480- $\frac{3}{4}$	294 (300- $\frac{3}{4}$)	
LNAV MDA	640- $\frac{3}{4}$	454 (500- $\frac{3}{4}$)	640-1 $\frac{1}{8}$	454 (500-1 $\frac{1}{8}$)
CIRCLING	680-1 485 (500-1)	740-1 545 (600-1)	980-2 $\frac{1}{4}$ 785 (800-2 $\frac{1}{4}$)	980-2 $\frac{1}{2}$ 785 (800-2 $\frac{1}{2}$)

SE-2, 14 MAY 2026 to 11 JUN 2026

SE-2, 14 MAY 2026 to 11 JUN 2026