

WAAS CH 57918	APP CRS 049°	Rwy Idg TDZE 191	4508
W05A		Apt Elev 195	

RNAV (GPS) RWY 5

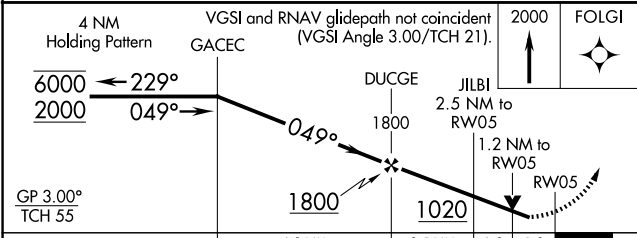
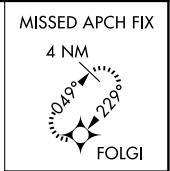
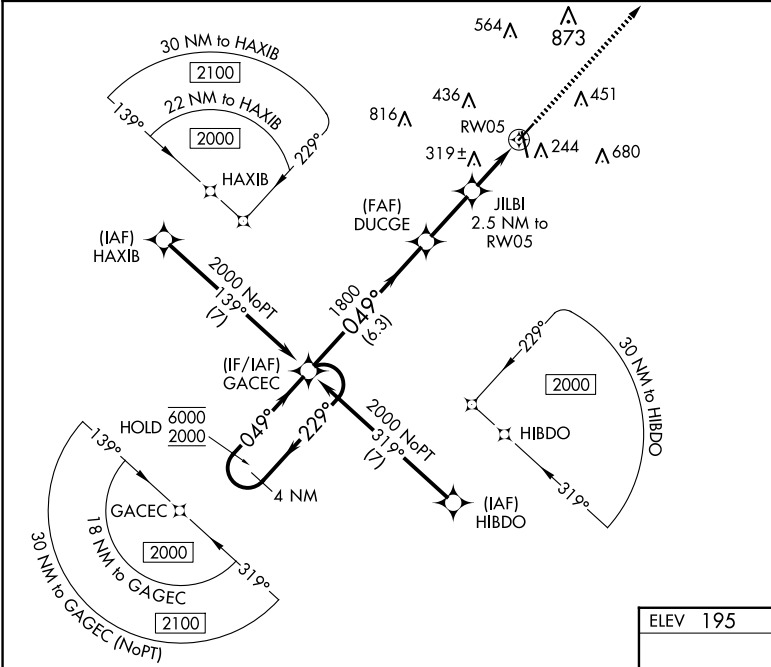
ORANGEBURG MUNI (OGB)

RNP APCH - GPS.

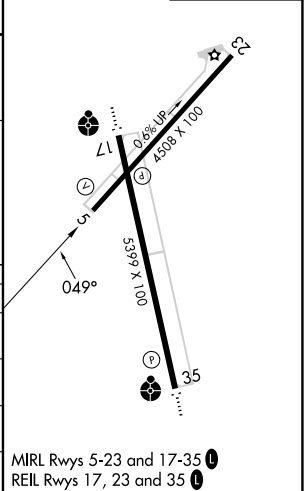
⚠ Circling Rwy 17 NA at night. Baro-VNAV and VDP NA when using Columbia Metro altimeter setting. Rwy 5 helicopter visibility reduction below 3/4 SM NA. For uncompensated Baro-VNAV systems, LNAV/VNAV NA below -4°C or above 54°C. When local altimeter setting not received, use Columbia Metro altimeter setting: increase LPV DA to 542 feet; increase LNAV/VNAV DA to 520 feet; increase all MDAs 80 feet and visibility Cats C and D 1/4 SM.

MISSED APPROACH:
Climb to 2000 direct FOLGI and hold.

ASOS 118.525	COLUMBIA APP CON 124.15 338.2	GCO 125.675	UNICOM 122.7 (CTAF) 0
------------------------	---	-----------------------	---------------------------------



ELEV 195	TDZE 191
----------	----------



CATEGORY	A	B	C	D
LPV DA		463-1	272 (300-1)	
LNAV/VNAV DA		441-1	250 (300-1)	
LNAV MDA	580-1	389 (400-1)	580-1 1/8	389 (400-1 1/8)
CIRCLING	680-1 485 (500-1)	740-1 545 (600-1)	980-2 1/4 785 (800-2 1/4)	980-2 1/2 785 (800-2 1/2)

MIRL Rwy 5-23 and 17-35 0
REIL Rwy 17, 23 and 35 0

SE-2, 14 MAY 2026 to 11 JUN 2026

SE-2, 14 MAY 2026 to 11 JUN 2026