

WAAS CH <b>45828</b> <b>W15A</b>	APP CRS <b>150°</b>	Rwy Idg TDZE Apt Elev	<b>4199</b> <b>1419</b> <b>1419</b>
--	------------------------	-----------------------------	---

# RNAV (GPS) RWY 15

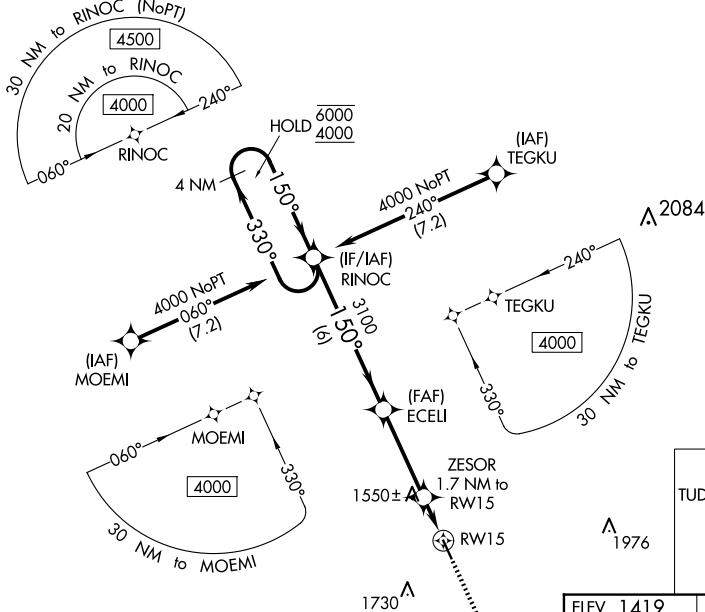
SHELDON RGNL (SHL)

RNP APCH-GPS.

▼  
▲ Rwy 15 helicopter visibility reduction below ¾ SM NA. For uncompensated Baro-VNAV systems, LNAV/VNAV NA below 17°C or above 54°C.

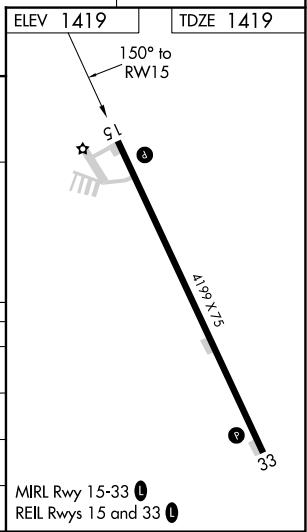
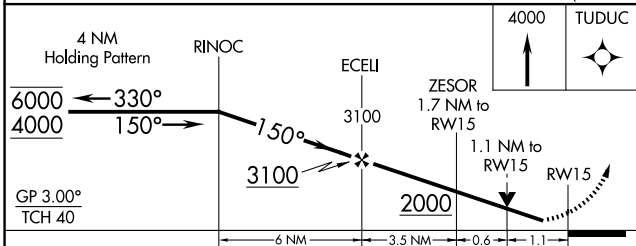
MISSED APPROACH: Climb to 4000 direct TUDUC and hold, continue climb-in-hold to 4000.

AWOS-3 <b>119.775</b>	MINNEAPOLIS CENTER <b>125.025 235.625</b>	UNICOM <b>122.8 (CTAF) ①</b>
--------------------------	--	---------------------------------



NC-3, 14 MAY 2026 to 11 JUN 2026

NC-3, 14 MAY 2026 to 11 JUN 2026



CATEGORY	A	B	C	D
LPV DA		1669-1 250 (300-1)		NA
LNAV/VNAV DA		1765-1 346 (400-1)		NA
LNAV MDA	1800-1	381 (400-1)	1800-1½ 381 (400-1½)	NA
CIRCLING	1820-1 401 (500-1)	1920-1 501 (600-1)	2080-1¾ 661 (700-1¾)	NA

MIRL Rwy 15-33 ①  
REIL Rwy 15 and 33 ①