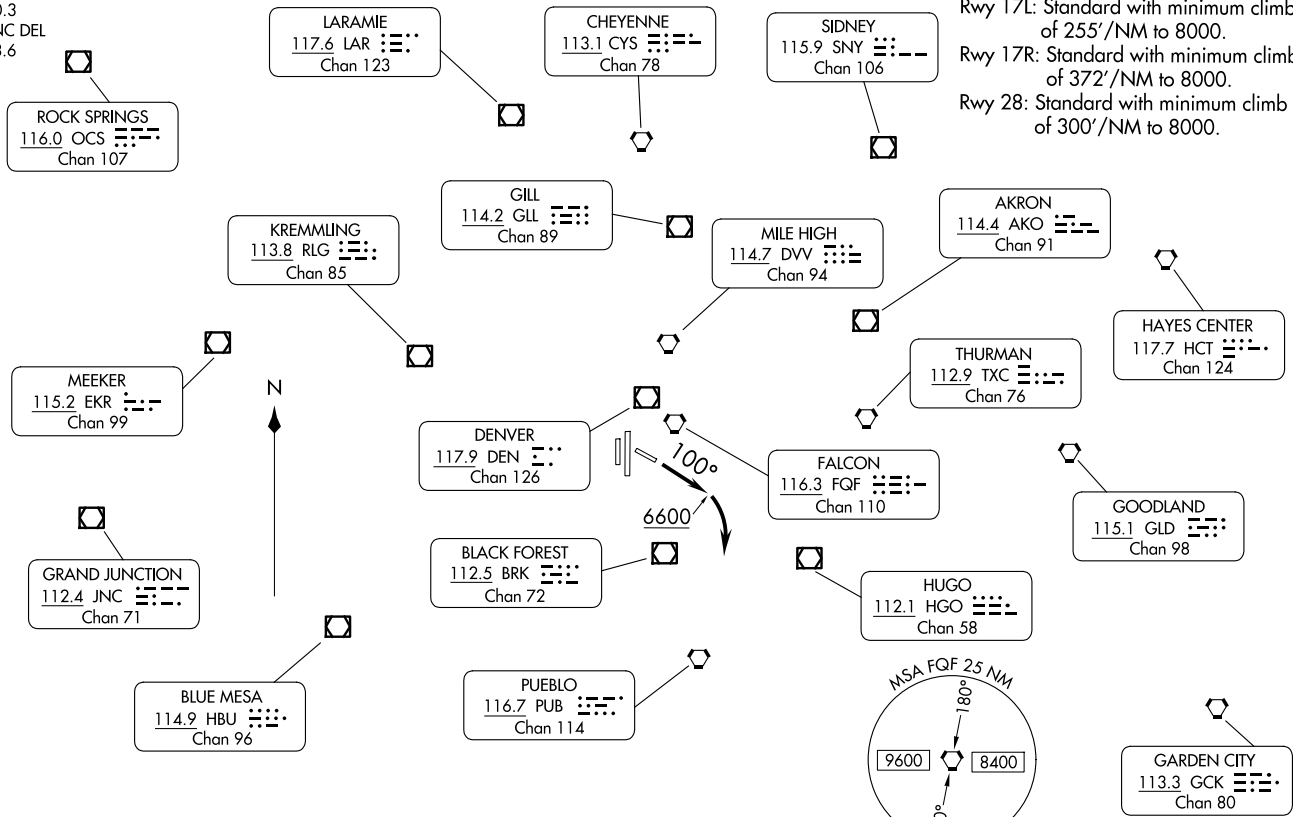


TOP ALTITUDE: ASSIGNED BY ATC. **RADAR required.**

TAKEOFF MINIMUMS:
 Rwy 10, 35L/R: Standard.
 Rwy 17L: Standard with minimum climb of 255'/NM to 8000.
 Rwy 17R: Standard with minimum climb of 372'/NM to 8000.
 Rwy 28: Standard with minimum climb of 300'/NM to 8000.

DENVER DEP CON
132.75 269.3
ATIS
120.3
CLNC DEL
128.6



NOTE: Chart not to scale.

(CONTINUED ON FOLLOWING PAGE)



DEPARTURE ROUTE DESCRIPTION

TAKEOFF RUNWAYS 17L/R, 28, 35L/R: Fly assigned heading and altitude for RADAR vectors to assigned route. Expect filed altitude 10 minutes after departure.

TAKEOFF RUNWAY 10: Climb on heading 100° to 6600 before turning right.

LOST COMMUNICATIONS: If no transmissions are received within one minute after departure, maintain assigned heading until 7000, then climb to filed altitude direct to DEN VOR/DME, then on assigned route. If filed altitude is above 10000, cross DEN VOR/DME at or above 11000.

SW-1, 14 MAY 2026 to 11 JUN 2026

SW-1, 14 MAY 2026 to 11 JUN 2026