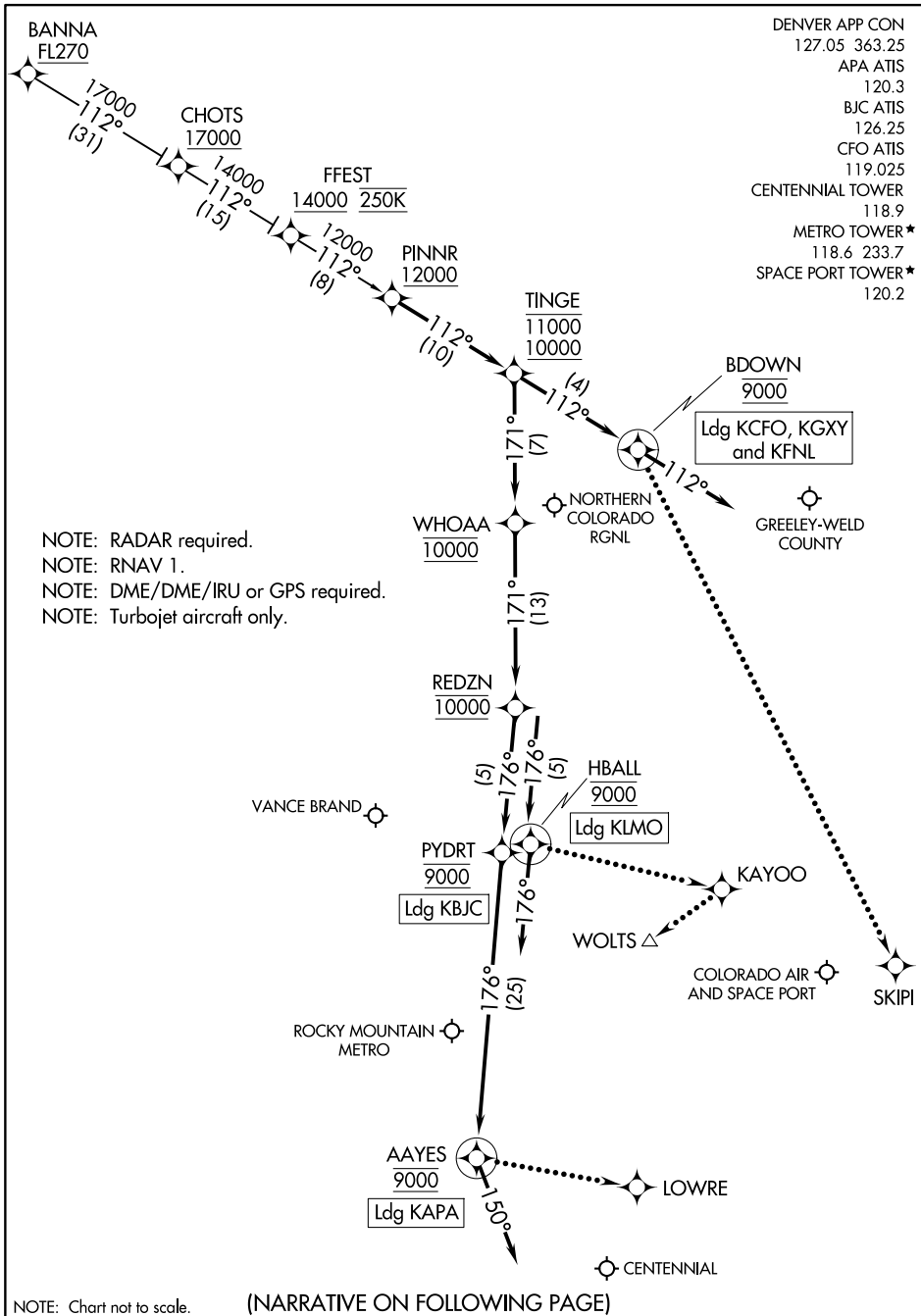


# PINNR THREE ARRIVAL(RNAV)

AL-5715 (FAA)

DENVER, COLORADO



NOTE: RADAR required.  
 NOTE: RNAV 1.  
 NOTE: DME/DME/IRU or GPS required.  
 NOTE: Turbojet aircraft only.

- DENVER APP CON 127.05 363.25
- APA ATIS 120.3
- BJC ATIS 126.25
- CFO ATIS 119.025
- CENTENNIAL TOWER 118.9
- METRO TOWER\* 118.6 233.7
- SPACE PORT TOWER\* 120.2

SW-1, 14 MAY 2026 to 11 JUN 2026

SW-1, 14 MAY 2026 to 11 JUN 2026

NOTE: Chart not to scale.

(NARRATIVE ON FOLLOWING PAGE)

# PINNR THREE ARRIVAL(RNAV)

DENVER, COLORADO

ARRIVAL ROUTE DESCRIPTION

BANNA TRANSITION (BANNA.PINNR3)

LANDING KAPA: From PINNR on track 112° to cross TINGE between 10000 and 11000, then on track 171° to cross WHOAA at 10000, then on track 171° to cross REDZN at 10000, then on track 176° to cross PYDRT at 9000, then on track 176° to cross AAYES at 9000, then on track 150°. Expect RADAR vectors to final approach course.

LANDING KBJC: From PINNR on track 112° to cross TINGE between 10000 and 11000, then on track 171° to cross WHOAA at 10000, then on track 171° to cross REDZN at 10000, then on track 176° to cross PYDRT at 9000. Expect RNAV (GPS) RWY 12L approach or visual approach as assigned by ATC.

LANDING KFNL/KCFO/KGXY: From PINNR on track 112° to cross TINGE between 10000 and 11000, then on track 112° to cross BDOWN at 9000, then on track 112°. Expect RADAR vectors to final approach course.

LANDING KLMO: From PINNR on track 112° to cross TINGE between 10000 and 11000, then on track 171° to cross WHOAA at 10000, then on track 171° to cross REDZN at 10000, then on track 176° to cross HBALL at 9000, then on track 176°. Expect RADAR vectors to final approach course.

LOST COMMUNICATIONS

LANDING KAPA: From AAYES direct LOWRE and execute RNAV (GPS) RWY 17L approach.

LANDING KBJC: From PYDRT execute RNAV (GPS) RWY 12L approach.

LANDING KCFO: From BDOWN direct SKIPI and execute ILS or LOC RWY 26 approach.

LANDING KLMO: From HBALL direct KAYOO direct WOLTS and execute RNAV (GPS) RWY 29 approach.

SW-1, 14 MAY 2026 to 11 JUN 2026

SW-1, 14 MAY 2026 to 11 JUN 2026