

WAAS CH 82107 W28A	APP CRS 283°	Rwy Ldg TDZE Apt Elev	4800 5813 5885
--	------------------------	-----------------------------	---

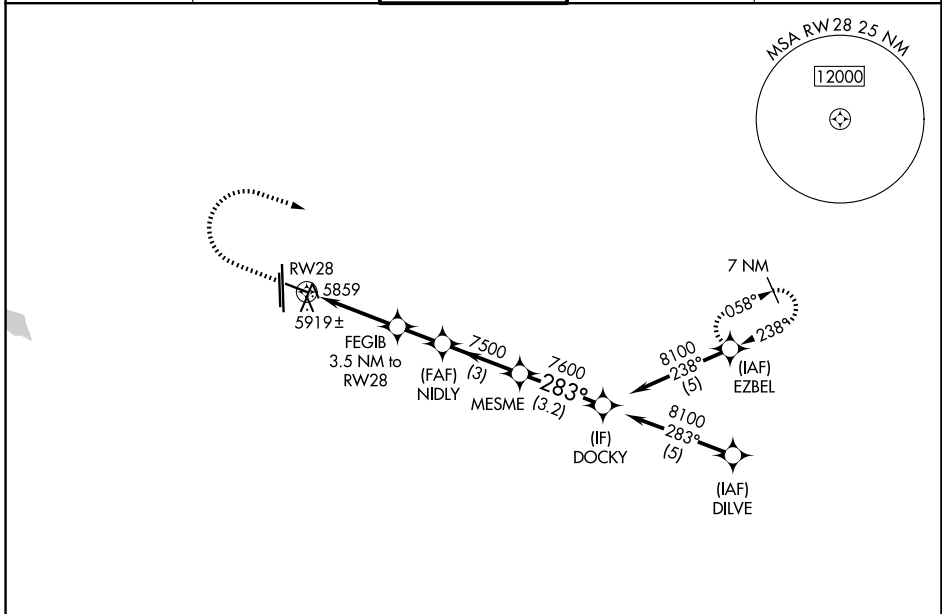
RNAV (GPS) RWY 28

CENTENNIAL (APA)

RNP APCH.
 ▼ For uncompensated Baro-VNAV systems, LNAV/VNAV NA below -26°C or above 49°C. Rwy 28 helicopter visibility reduction below 3/4 SM NA. Circling Rwy 35L NA at night.

MISSED APPROACH: Climb to 6400 then climbing right turn to 9000 direct EZBEL and hold.

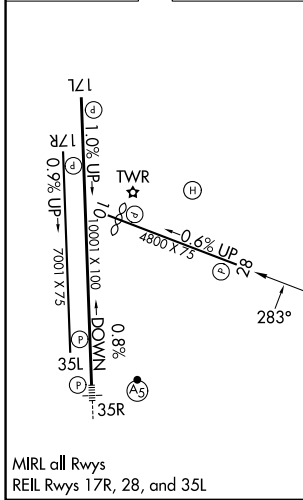
ATIS 120.3	DENVER APP CON 132.75 269.3	CENTENNIAL TOWER 118.9	GND CON 121.8	CLNC DEL 128.6
----------------------	---------------------------------------	----------------------------------	-------------------------	--------------------------



SW-1, 14 MAY 2026 to 11 JUN 2026

SW-1, 14 MAY 2026 to 11 JUN 2026

ELEV 5885	TDZE 5813
------------------	------------------



	6400	9000	EZBEL	
	↑	↷	✦	
	*LNAV only.			
	RWY 28	FEGIB 3.5 NM to RWY 28	NIDLY 7500	MESME 7600
		*1.3 NM to RWY 28	DOCKY 8100	
		6940*	7500	8100
		1.3	2.2 NM	1.7 NM
			3 NM	3.2 NM
				GP 3.00° TCH 41
CATEGORY	A	B	C	D
LPV DA		6079-7/8	266 (200-7/8)	
LNAV/VNAV DA		6119-1	306 (300-1)	
LNAV MDA	6260-1	447 (400-1)	6260-1 3/8	447 (400-1 3/8)
CIRCLING	6400-1 515 (600-1)	6540-1 655 (700-1)	6740-2 1/2 855 (900-2 1/2)	6900-3 1015 (1100-3)

DENVER, COLORADO
 MIREL all Rwys
 REIL Rwys 17R, 28, and 35L

39°34'N-104°51'W

RNAV (GPS) RWY 28

CENTENNIAL (APA)