

(ZOMBZ.ZOMBZ6) 25107

AL-5715 (FAA)

# ZOMBZ SIX ARRIVAL (RNAV) Transition Routes

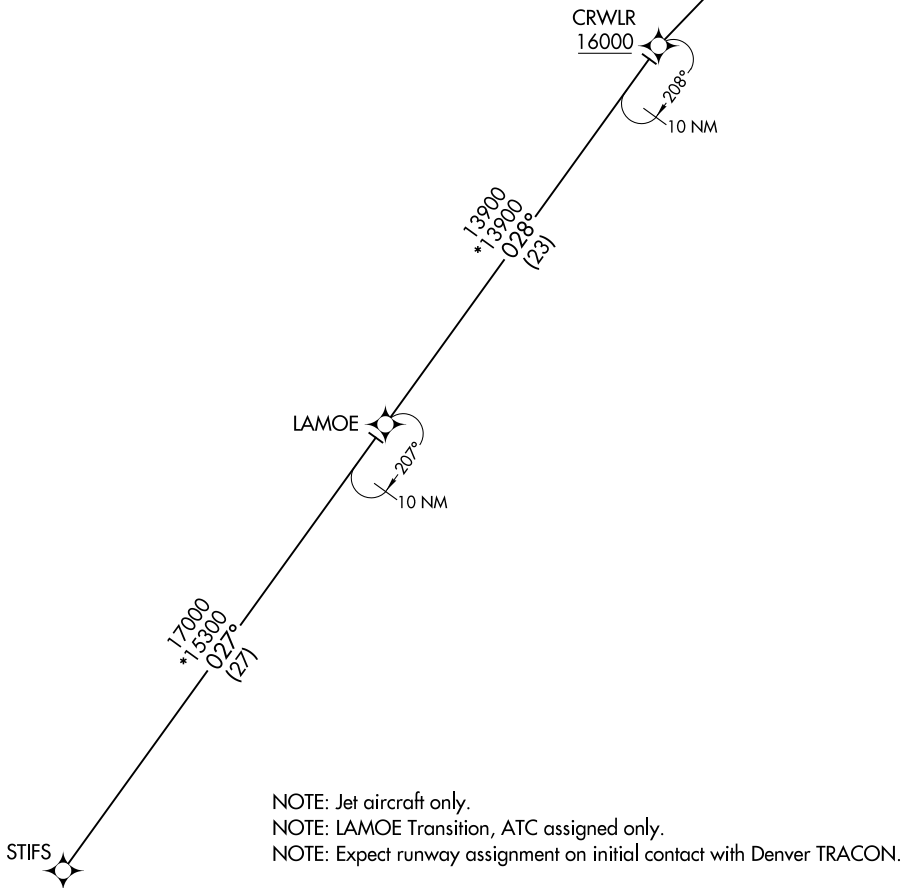
DENVER, COLORADO

DENVER CENTER  
 133.4 377.175  
 DENVER APP CON  
 128.45 251.075  
 APA ATIS  
 120.3  
 CFO ATIS  
 119.025  
 CENTENNIAL TOWER  
 118.9  
 SPACE PORT TOWER ★  
 120.2

RNAV 1 - DME/DME IRU or GPS.
RADAR required.

See following page for arrival routes

<u>ZOMBZ</u>	
15000	250K



NOTE: Jet aircraft only.  
 NOTE: LAMOE Transition, ATC assigned only.  
 NOTE: Expect runway assignment on initial contact with Denver TRACON.

NOTE: Chart not to scale.

LAMOE TRANSITION (LAMOE.ZOMBZ6)  
STIFS TRANSITION (STIFS.ZOMBZ6)

(CONTINUED ON FOLLOWING PAGE)

SW-1, 14 MAY 2026 to 11 JUN 2026

SW-1, 14 MAY 2026 to 11 JUN 2026

# ZOMBZ SIX ARRIVAL (RNAV) Transition Routes

DENVER, COLORADO

(ZOMBZ.ZOMBZ6) 17APR25

# ZOMBZ SIX ARRIVAL (RNAV) Arrival Routes

DENVER, COLORADO

DENVER CENTER  
133.4 377.175  
DENVER APP CON  
128.45 251.075  
APA ATIS  
120.3  
CFO ATIS  
119.025  
CENTENNIAL TOWER  
118.9  
SPACE PORT TOWER ★  
120.2

RNAV 1 - DME/DME IRU or GPS.
RADAR required.

✦ SKIPI  
COLORADO AIR AND SPACE PORT

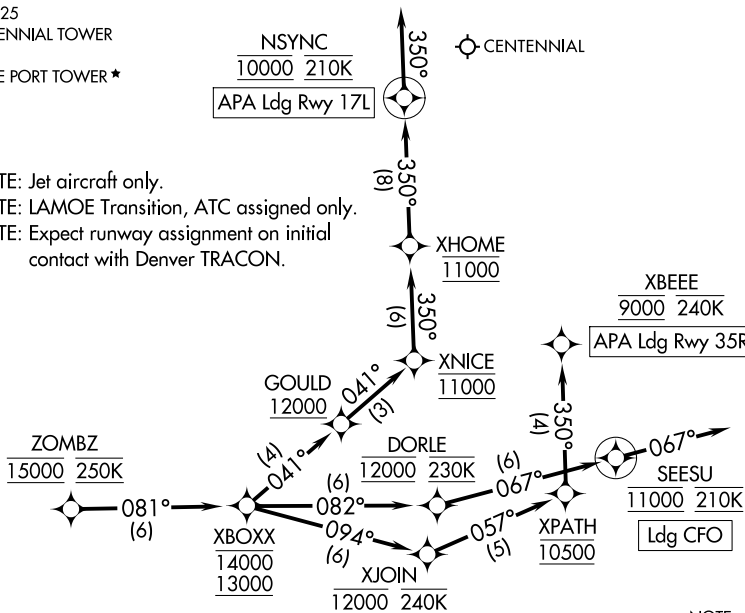
✦ LOWRE

✦ CENTENNIAL

NSYNC  
10000 210K  
APA Ldg Rwy 17L

XBEEE  
9000 240K  
APA Ldg Rwy 35R

NOTE: Jet aircraft only.  
NOTE: LAMOE Transition, ATC assigned only.  
NOTE: Expect runway assignment on initial contact with Denver TRACON.



NOTE: Chart not to scale.

## ARRIVAL ROUTE DESCRIPTION

**LANDING APA RUNWAY 17L:** From ZOMBZ on track 081° to cross XBOXX between 13000 and 14000, then on track 041° to cross GOULD at or above 12000, then on track 041° to cross XNICE at 11000, then on track 350° to cross XHOME at 11000, then on track 350° to cross NSYNC at 10000 and at 210K, then on track 350°. Expect RADAR vectors to final approach course.

**LANDING APA RUNWAY 35R:** From ZOMBZ on track 081° to cross XBOXX between 13000 and 14000, then on track 094° to cross XJOIN at 12000 and at 240K, then on track 057° to cross XPATH at 10500, then on track 350° to cross XBEEE at 9000 and at or below 240K. Expect ILS or RNAV RWY 35R approach.

**LANDING CFO:** From ZOMBZ on track 081° to cross XBOXX between 13000 and 14000, then on track 082° to cross DORLE at 12000 and at 230K, then on track 067° to cross SEESU at 11000 and at 210K, then on track 067°. Expect RADAR vectors to final approach course.

## LOST COMMUNICATIONS

In the event of lost communications prior to runway transition assignment, when APA is landing north, proceed on the ILS RWY 35R approach, when APA is landing south, proceed on the RNAV (GPS) RWY 17L from LOWRE.

**LANDING CFO:** proceed on the ILS RWY 26 approach from SKIPI.