

WAAS CH 49104 W25A	APP CRS 250°	Rwy Ldg TDZE 1311 Apt Elev 1318
--	------------------------	--

RNAV (GPS) RWY 25

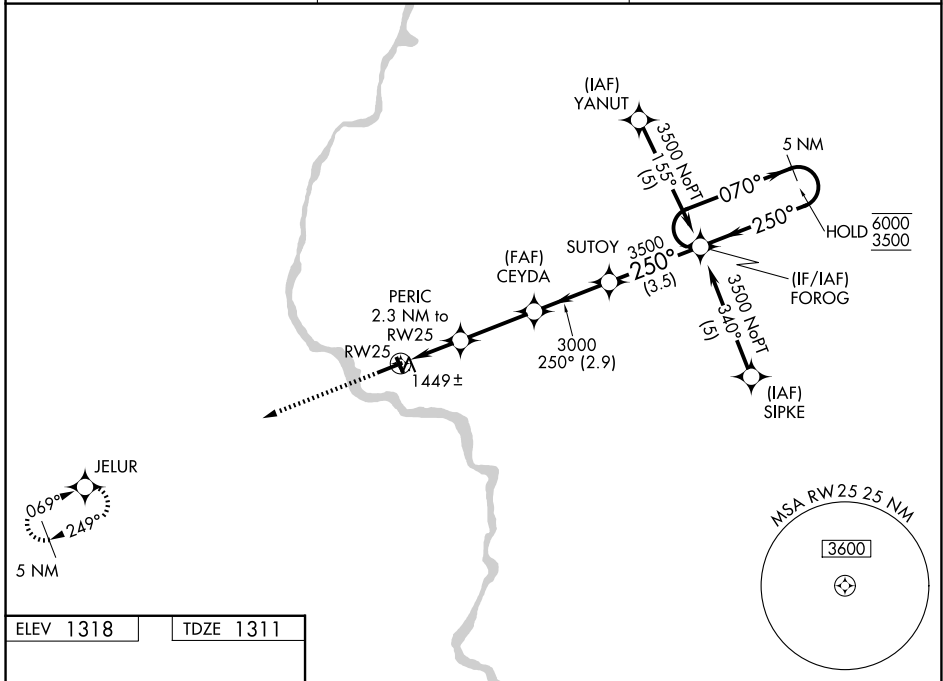
MERRILL MUNI (R.R.L)

RNP APCH - GPS.

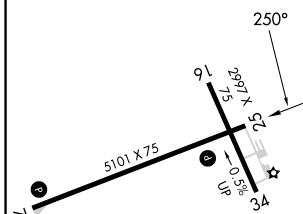
⚠ Circling Rwy 16, 34 NA at night. Rwy 25 helicopter visibility reduction below $\frac{3}{4}$ SM NA. For uncompensated Baro-VNAV systems, LNAV/VNAV NA below -17°C or above 54°C.

MISSED APPROACH: Climb to 3500 direct JELUR and hold.

AWOS-3 119.925	MINNEAPOLIS CENTER 124.4 317.7	UNICOM 122.8 (CTAF)
--------------------------	--	-------------------------------



ELEV 1318	TDZE 1311
------------------	------------------



3500	JELUR	PERIC 2.3 NM to RW25	CEYDA 3000	SUTOY	FOROG	5 NM Holding Pattern
3500		2060	3000	3500	6000	3500
		1.1 NM	2.8 NM	2.9 NM	3.5 NM	
						GP 3.00° TCH 40

	A	B	C	D
CATEGORY				
LPV DA	1640-1	329 (400-1)		NA
LNAV/VNAV DA	1719-1½	408 (500-1½)		NA
LNAV MDA	1700-1	389 (400-1)	1700-1½ 389 (400-1½)	NA
CIRCLING	1760-1 442 (500-1)	1780-1 462 (500-1)	1920-1¾ 602 (700-1¾)	NA

REIL Rwy 7 and 25 **Ⓛ**
MIRL Rwy 16-34 and 7-25 **Ⓛ**

EC-3, 14 MAY 2026 to 11 JUN 2026

EC-3, 14 MAY 2026 to 11 JUN 2026