

WAAS CH 70604 W07A	APP CRS 069°	Rwy Ldg TDZE 5101 1318	Apt Elev 1318
--	------------------------	--	-------------------------

RNAV (GPS) RWY 7

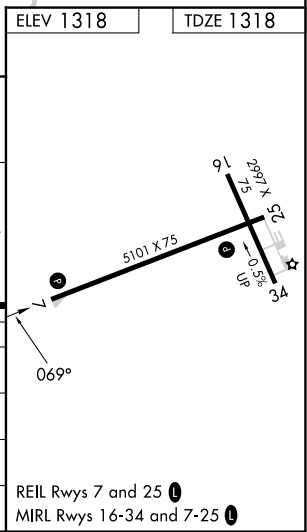
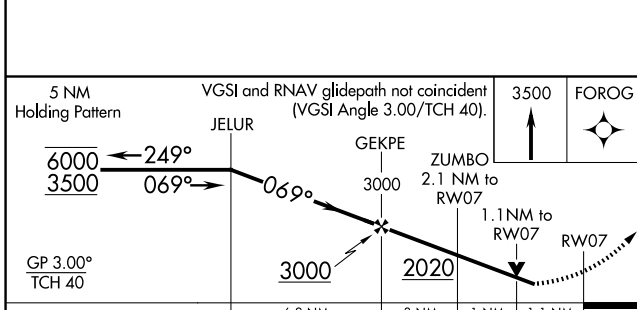
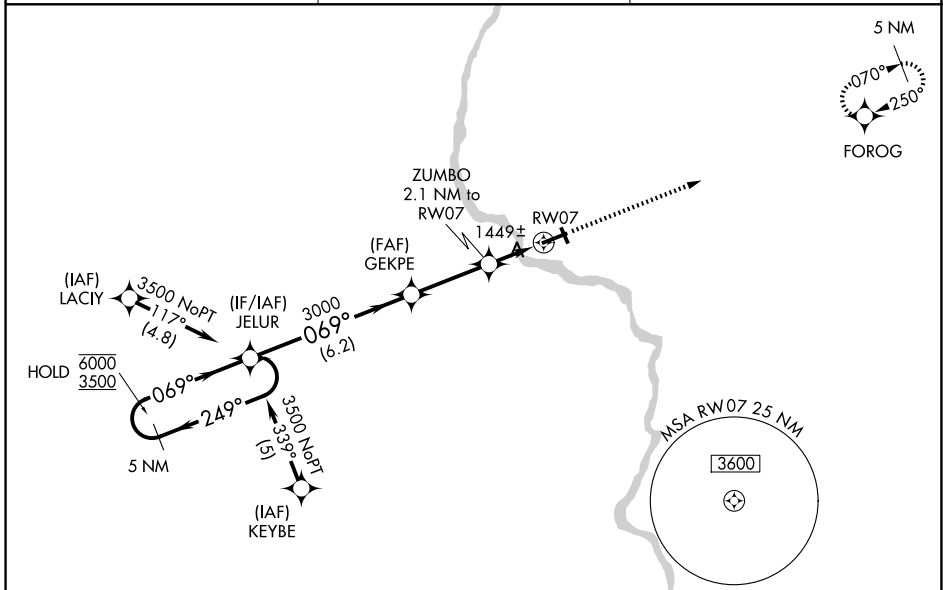
MERRILL MUNI (R.R.L.)

RNP APCH - GPS.

▼ Circling Rwy 16, 34 NA at night. Rwy 7 helicopter visibility reduction below 3/4 SM NA.
▲ For uncompensated Baro-VNAV systems, LNAV/VNAV NA below -17°C or above 54°C.

MISSED APPROACH: Climb to 3500 direct FOROG and hold.

AWOS-3 119.925	MINNEAPOLIS CENTER 124.4 317.7	UNICOM 122.8 (CTAF) 0
--------------------------	--	---------------------------------



CATEGORY	A	B	C	D
LPV DA	1635-1	317 (400-1)		NA
LNAV/VNAV DA	1754-1¼	436 (500-1¼)		NA
LNAV MDA	1700-1	382 (400-1)	1700-1⅛ 382 (400-1⅛)	NA
CIRCLING	1760-1 442 (500-1)	1780-1 462 (500-1)	1920-1¾ 602 (700-1¾)	NA

EC-3, 14 MAY 2026 to 11 JUN 2026

EC-3, 14 MAY 2026 to 11 JUN 2026