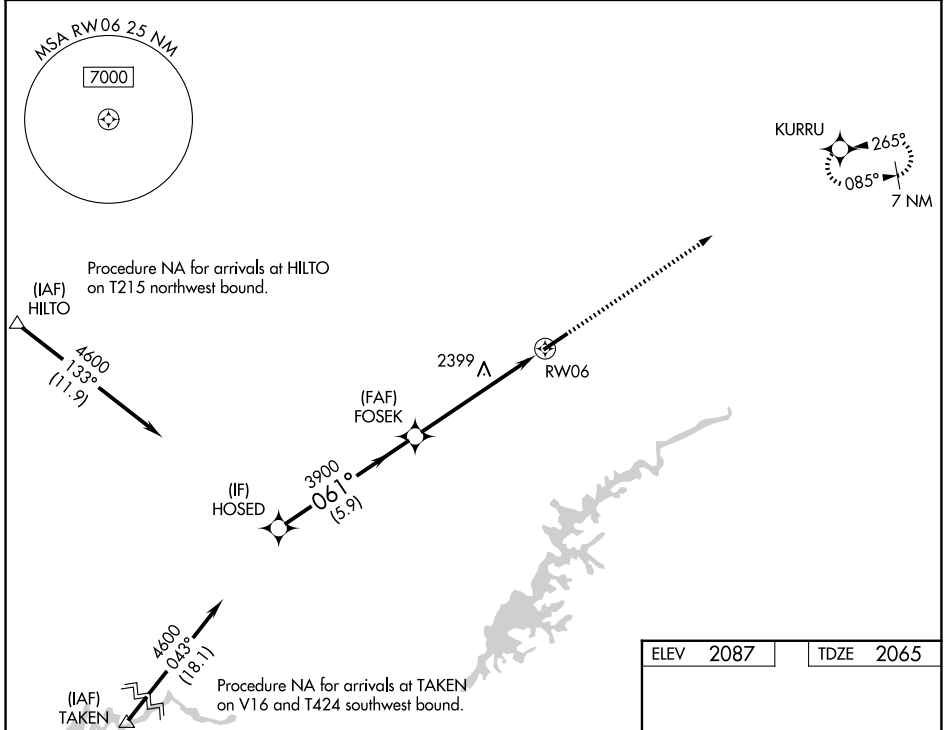


WAAS CH 82411 W06A	APP CRS 061°	Rwy Ldg TDZE Apt Elev	5500 2065 2087
--	------------------------	-----------------------------	---

RNAV (GPS) RWY 6

VIRGINIA HIGHLANDS (VJI)

RNP APCH - GPS.		MISSED APPROACH: Climb to 7300 direct KURRU and hold, continue climb-in-hold to 7300.
<p>▼ Rwy 6 helicopter visibility reduction below 3/4 SM NA. For uncompensated Baro-VNAV systems, LNAV/VNAV NA below -19°C or above 54°C.</p> <p>▲</p>		
AWOS-3 128.125	TRI CITY APP CON ★ 125.25 349.0	UNICOM 122.8 (CTAF) ①



NE-3, 14 MAY 2026 to 11 JUN 2026

NE-3, 14 MAY 2026 to 11 JUN 2026

ELEV	2087	TDZE	2065
<p>HOSED 4600</p> <p>FOSEK 3900</p> <p>GP 3.00° TCH 45</p> <p>3900</p> <p>1.7 NM to RW06</p> <p>7300 KURRU</p>			
CATEGORY	A	B	C
LPV DA	2456-1 1/8 391 (400-1 1/8)		
LNAV/VNAV DA	2528-1 3/8 463 (500-1 3/8)		
LNAV MDA	2660-1 595 (600-1)	2660-1 3/4 595 (600-1 3/4)	
CIRCLING	2860-1 773 (800-1)	2860-2 1/4 773 (800-2 1/4)	3080-3 993 (1000-3)

MIRL Rwy 6-24 ①
REIL Rwy 6 and 24 ①