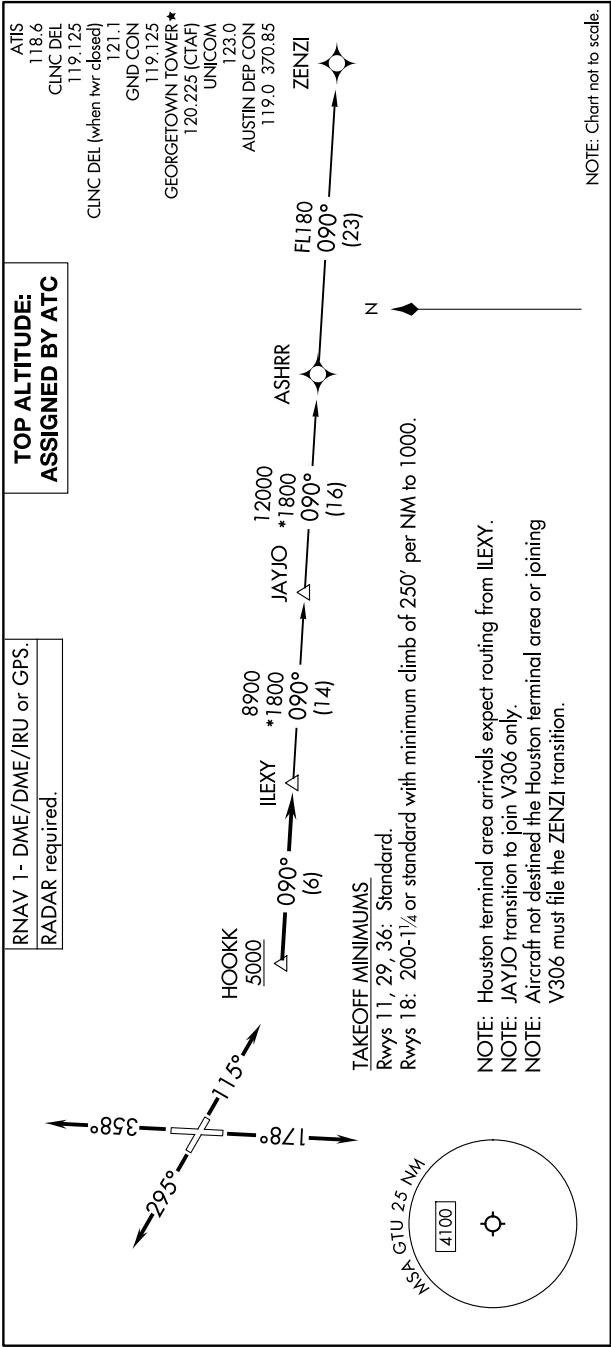


(ILEXY4.ILEXY) 23166

# ILEXY FOUR DEPARTURE (RNAV) AL-5724 (FAA)

GEORGETOWN EXEC (GTU)  
GEORGETOWN, TEXAS

SC-3, 14 MAY 2026 to 11 JUN 2026



**DEPARTURE ROUTE DESCRIPTION**

TAKEOFF RUNWAY 11: Climb on heading 115° or as assigned by ATC for vectors to cross HOOKK at or above 5000, thence . . . .  
 TAKEOFF RUNWAY 18: Climb on heading 178° or as assigned by ATC for vectors to cross HOOKK at or above 5000, thence . . . .  
 TAKEOFF RUNWAY 29: Climb on heading 295° or as assigned by ATC for vectors to cross HOOKK at or above 5000, thence . . . .  
 TAKEOFF RUNWAY 36: Climb on heading 358° or as assigned by ATC for vectors to cross HOOKK at or above 5000, thence . . . .  
 . . . . on track 090° to IILEXY, then on transition. Maintain altitude assigned by ATC. Expect filed altitude 10 minutes after departure.

JAYJO TRANSITION (ILEXY4.JAYJO)  
ZENZI TRANSITION (ILEXY4.ZENZI)

# ILEXY FOUR DEPARTURE (RNAV) (ILEXY4.ILEXY) 15JUN23

GEORGETOWN, TEXAS  
GEORGETOWN EXEC (GTU)

SC-3, 14 MAY 2026 to 11 JUN 2026