

(SAYBR3.SAYBR) 22195

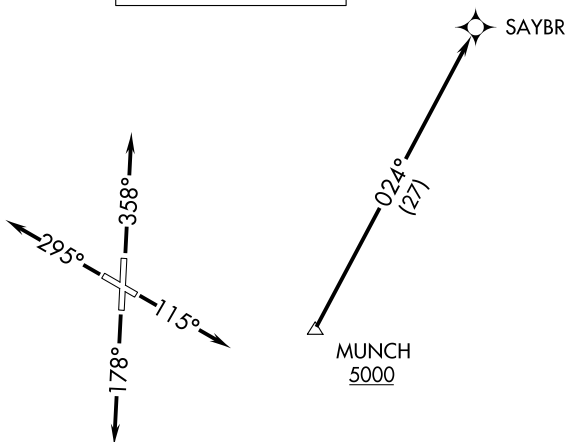
SAYBR THREE DEPARTURE (RNAV) AL-5724 (FAA)

GEORGETOWN EXEC(GTU)

GEORGETOWN, TEXAS

ATIS
 118.6
 CLNC DEL
 119.125
 121.1 (when twr closed)
 GND CON
 119.125
 GEORGETOWN TOWER★
 120.225
 UNICOM
 123.0
 AUSTIN DEP CON
 119.0 370.85

**TOP ALTITUDE:
 ASSIGNED BY ATC**



- NOTE: RADAR required.
- NOTE: DME/DME/IRU or GPS required.
- NOTE: RNAV 1.
- NOTE: For DFW terminal area arrivals at FL230 or below only.

TAKEOFF MINIMUMS

Rwys 11, 29, 36: Standard.

Rwy 18: 200-1¼ or standard with minimum climb of 250' per NM to 1000.

NOTE: Chart not to scale.



DEPARTURE ROUTE DESCRIPTION

TAKEOFF RUNWAY 11: Climb on heading 115° or as assigned by ATC for vectors to cross MUNCH at or above 5000, thence. . . .

TAKEOFF RUNWAY 18: Climb on heading 178° or as assigned by ATC for vectors to cross MUNCH at or above 5000, thence. . . .

TAKEOFF RUNWAY 29: Climb on heading 295° or as assigned by ATC for vectors to cross MUNCH at or above 5000, thence. . . .

TAKEOFF RUNWAY 36: Climb on heading 358° or as assigned by ATC for vectors to cross MUNCH at or above 5000, thence. . . .

. . . . on track 024° to SAYBR. Maintain altitude assigned by ATC.
Expect filed altitude 10 minutes after departure.

SAYBR THREE DEPARTURE (RNAV)

(SAYBR3.SAYBR) 22APR21

GEORGETOWN, TEXAS
GEORGETOWN EXEC(GTU)

SC-3, 14 MAY 2026 to 11 JUN 2026

SC-3, 14 MAY 2026 to 11 JUN 2026