

(BEAVY7.BEAVY) 26134

AL-5726 (FAA)

CHARLOTTE/MONROE EXEC (EQY)  
MONROE, NORTH CAROLINA

# BEAVY SEVEN DEPARTURE (RNAV)

CHARLOTTE DEP CON  
120.05 307.8  
ASOS  
135.775  
CLNC DEL  
132.55

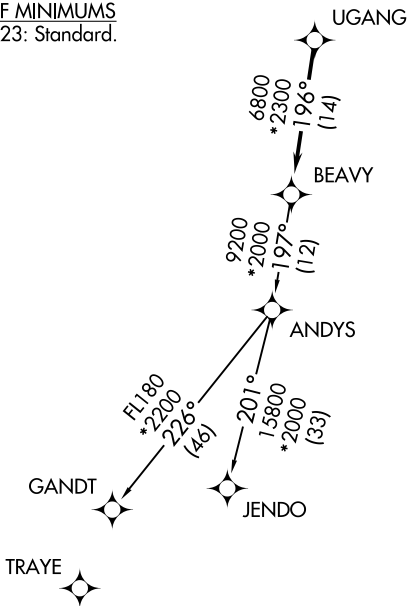
RNAV 1 - DME/DME/IRU or GPS.

RADAR required.

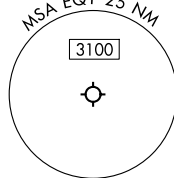
**TOP ALTITUDE:  
3000**

### TAKEOFF MINIMUMS

Rwys 5, 23: Standard.



- NOTE: Turbojet only.
- NOTE: If unable to accept climb rates, advise ATC on initial contact.
- NOTE: Transponder code will be issued via PDC or Charlotte CLNC DEL.
- NOTE: Upon reaching 10000 MSL, accelerate to and maintain 280K, if unable advise ATC.



NOTE: Chart not to scale.



### DEPARTURE ROUTE DESCRIPTION

Climb on heading assigned by ATC, for RADAR vectors to UGANG, then on depicted route to BEAVY. Then on assigned transition, maintain 3000, expect filed altitude 10 minutes after departure.

GANDT TRANSITION (BEAVY7.GANDT)  
JENDO TRANSITION (BEAVY7.JENDO)

# BEAVY SEVEN DEPARTURE (RNAV)

(BEAVY7.BEAVY) 14MAY26

MONROE, NORTH CAROLINA  
CHARLOTTE/MONROE EXEC (EQY)

SE-2, 14 MAY 2026 to 11 JUN 2026

SE-2, 14 MAY 2026 to 11 JUN 2026