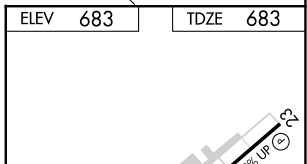
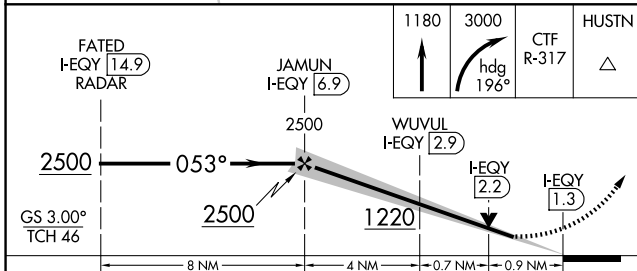
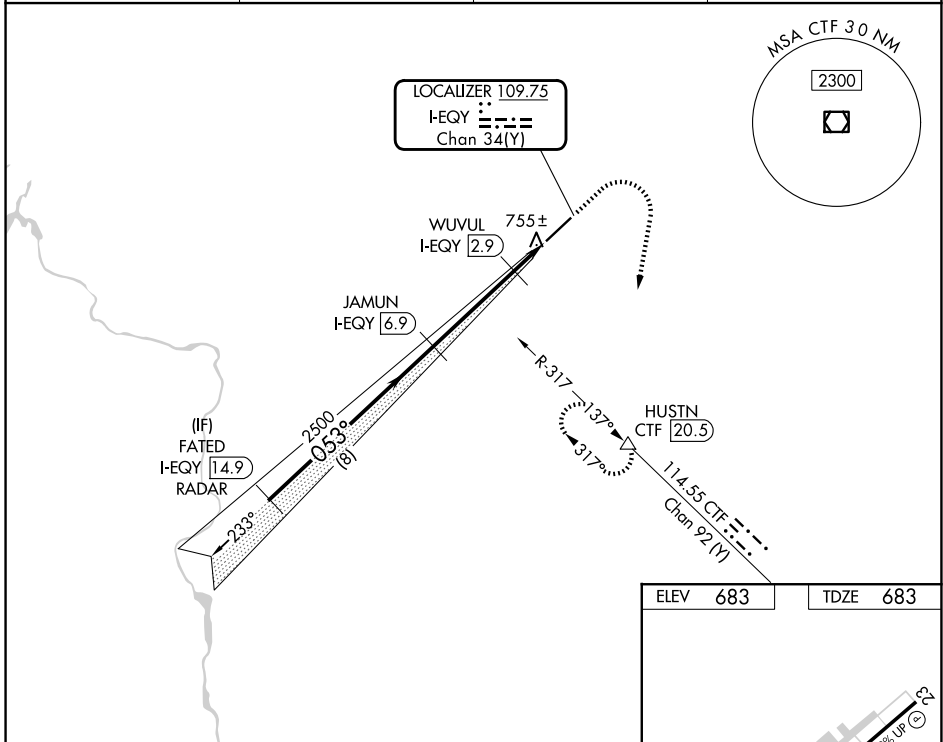


LOC/DME I-EQY 109.75 Chan 34(Y)	APP CRS 053°	Rwy Ldg TDZE Apt Elev	7001 683 683
---	------------------------	-----------------------------	---

ILS or LOC RWY 5
CHARLOTTE/MONROE EXEC (EQY)

DME required. RADAR required for procedure entry.		MALSR 	MISSED APPROACH: Climb to 1180 then climbing right turn to 3000 on heading 196° and CTF VOR/DME R-317 to HUSTN/CTF 20.5 DME and hold, continue climb-in-hold to 3000.
Rwy 5 helicopter visibility reduction below 3/4 SM NA. Inop table does not apply to S-ILS 5 all Cats. For inop ALS, increase S-LOC 5 all Cats visibility to 1 SM.			

ASOS 135.775	CHARLOTTE APP CON 120.05 307.8	CLNC DEL 132.55	UNICOM 122.7 (CTAF)
------------------------	--	---------------------------	-------------------------------



CATEGORY	A	B	C	D	HIRL Rwy 5-23	REIL Rwy 23
S-ILS 5		933-3/4	250 (300-3/4)		FAF to MAP 5.6 NM	
S-LOC 5		1020-3/4	337 (400-3/4)			
CIRCLING	1220-1	537 (600-1)	1220-1 1/2 537 (600-1 1/2)	1480-2 1/2 797 (800-2 1/2)	Knots	60 90 120 150 180
					Min:Sec	5:35 3:44 2:48 2:14 1:52

SE-2, 14 MAY 2026 to 11 JUN 2026

SE-2, 14 MAY 2026 to 11 JUN 2026