

(KRITR7.KRITR) 26134

AL-5726 (FAA)

CHARLOTTE/MONROE EXEC (EQY)  
MONROE, NORTH CAROLINA

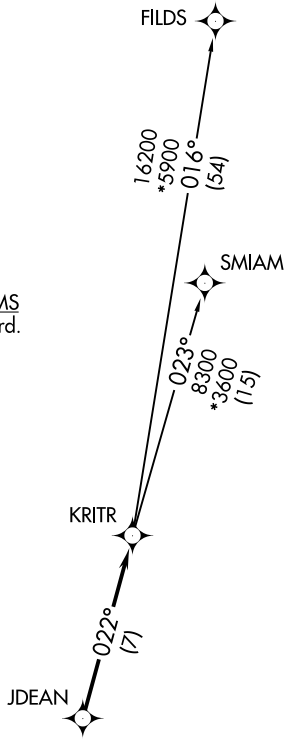
# KRITR SEVEN DEPARTURE (RNAV)

CHARLOTTE DEP CON  
120.05 307.8  
ASOS  
135.775  
CLNC DEL  
132.55

**TOP ALTITUDE:  
3000**

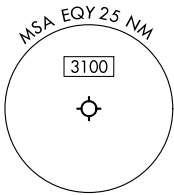
RNAV 1 - DME/DME/IRU or GPS.  
RADAR required.

TAKEOFF MINIMUMS  
Rwys 5, 23: Standard.



- NOTE: Turbojet only.
- NOTE: Transponder code will be issued via PDC or CLT CLNC DEL.
- NOTE: If unable to accept climb rates, advise ATC on initial contact.
- NOTE: Upon reaching 10000 MSL, accelerate to and maintain 280K, if unable advise ATC.

NOTE: Chart not to scale.



## DEPARTURE ROUTE DESCRIPTION

Climb on heading assigned by ATC for RADAR vectors to JDEAN, then on track 022° to KRITR, then on assigned transition. Maintain 3000, expect filed altitude 10 minutes after departure.

FILDS TRANSITION (KRITR7.FILDS)  
SMIAM TRANSITION (KRITR7.SMIAM)

KRITR SEVEN DEPARTURE (RNAV)

(KRITR7.KRITR) 14MAY26

MONROE, NORTH CAROLINA  
CHARLOTTE/MONROE EXEC (EQY)

SE-2, 14 MAY 2026 to 11 JUN 2026

SE-2, 14 MAY 2026 to 11 JUN 2026