

(KWEEN6.KWEEN) 26134

AL-5726 (FAA)

CHARLOTTE/MONROE EXEC (EQY)
MONROE, NORTH CAROLINA

KWEEN SIX DEPARTURE (RNAV)

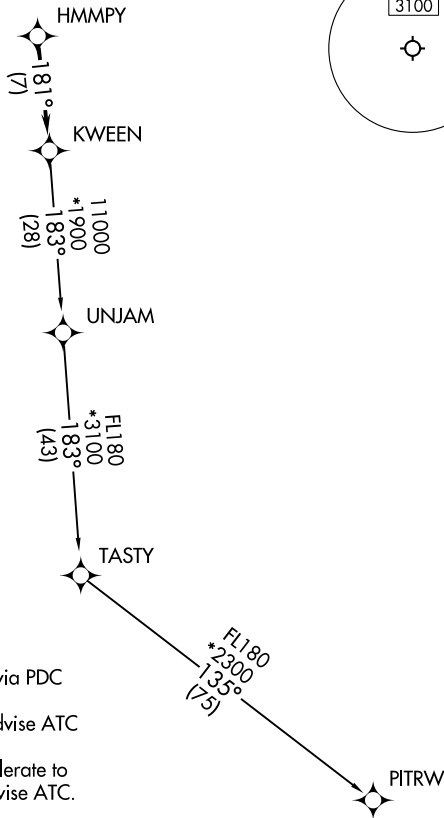
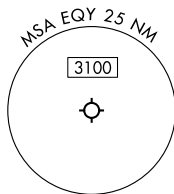
CHARLOTTE DEP CON
120.05 307.8
ASOS
135.775
CLNC DEL
132.55

RNAV 1 - DME/DME/IRU or GPS.

RADAR required.

**TOP ALTITUDE:
3000**

TAKEOFF MINIMUMS
Rwys 5, 23: Standard.



- NOTE: Turbojet only.
- NOTE: Transponder code will be issued via PDC or CLT CLNC DEL.
- NOTE: If unable to accept climb rates, advise ATC on initial contact.
- NOTE: Upon reaching 10000 MSL, accelerate to and maintain 280K, if unable advise ATC.

NOTE: Chart not to scale.

DEPARTURE ROUTE DESCRIPTION

Climb on heading assigned by ATC for RADAR vectors to HMMPY, then on track 181° to KWEEN, then on assigned transition, maintain 3000, expect filed altitude 10 minutes after departure.

PITRW TRANSITION (KWEEN6.PITRW)
UNJAM TRANSITION (KWEEN6.UNJAM)

KWEEN SIX DEPARTURE (RNAV)
(KWEEN6.KWEEN) 14MAY26

MONROE, NORTH CAROLINA
CHARLOTTE/MONROE EXEC (EQY)

SE-2, 14 MAY 2026 to 11 JUN 2026

SE-2, 14 MAY 2026 to 11 JUN 2026