

WAAS CH 90141 W23A	APP CRS 233°	Rwy Ldg 7001 TDZE 671 Apt Elev 683
--	------------------------	---

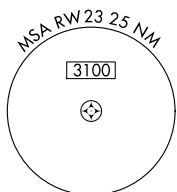
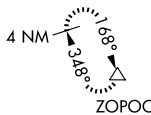
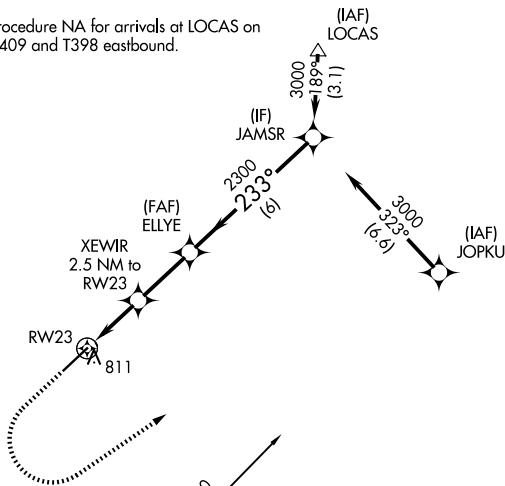
RNAV (GPS) RWY 23

CHARLOTTE/MONROE EXEC (EQY)

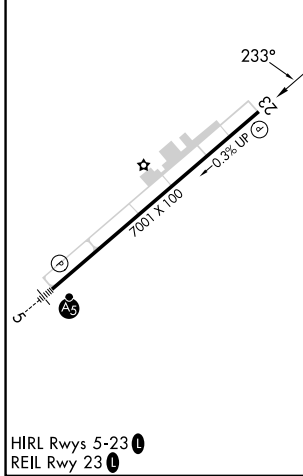
RNP APCH-GPS.		MISSED APPROACH: Climb to 1200 then climbing left turn to 3000 direct ZOPOC and hold.	
▼	Rwy 23 helicopter visibility reduction below 3/4 SM NA. For uncompensated Baro-VNAV systems, LNAV/VNAV NA below -7°C or above 54°C.		

ASOS 135.775	CHARLOTTE APP CON 120.05 307.8	CLNC DEL 132.55	UNICOM 122.7 (CTAF) 0
------------------------	--	---------------------------	---------------------------------

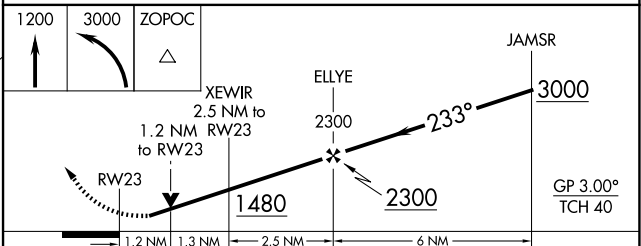
Procedure NA for arrivals at LOCAS on V409 and T398 eastbound.



ELEV 683	TDZE 671
----------	----------



Procedure NA for arrivals at HUSTN on V296 westbound, V259 northwest bound, and T202 southwest bound.



CATEGORY	A	B	C	D
LPV DA		939-1	268 (300-1)	
LNAV/VNAV DA		981-1	310 (300-1)	
LNAV MDA	1080-1	409 (400-1)	1080-1½	409 (400-1½)
CIRCLING	1220-1	537 (600-1)	1220-1½	1480-2½
			537 (600-1½)	797 (800-2½)

SE-2, 14 MAY 2026 to 11 JUN 2026

SE-2, 14 MAY 2026 to 11 JUN 2026