

WAAS CH 58012 W27A	APP CRS 270°	Rwy Ldg 5445
		TDZE 588
		Apt Elev 590

RNAV (GPS) RWY 27

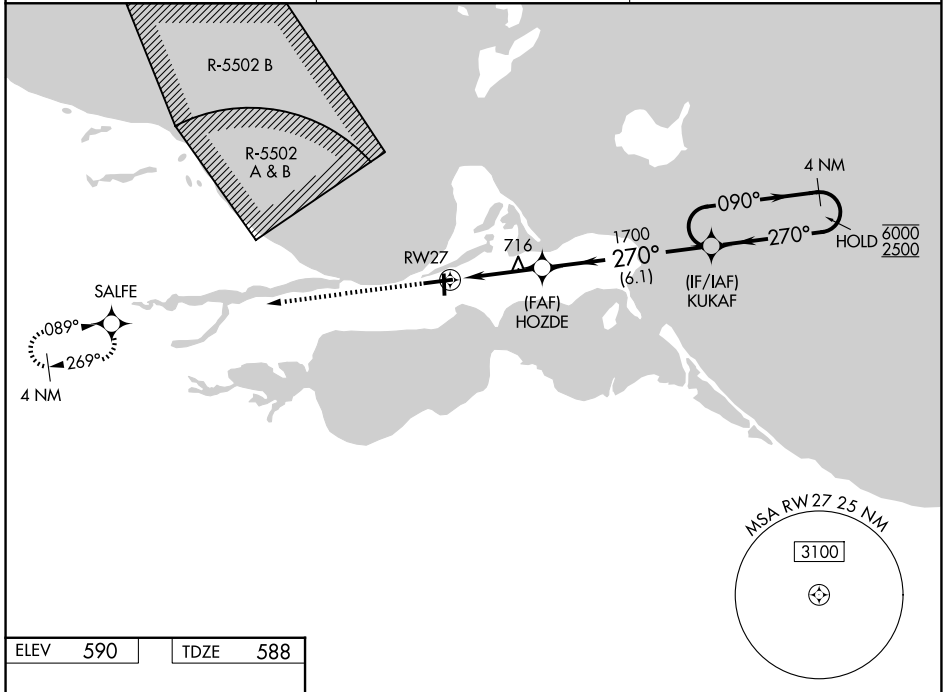
ERIE-OTTAWA INTL (PCW)

RNP APCH - GPS.

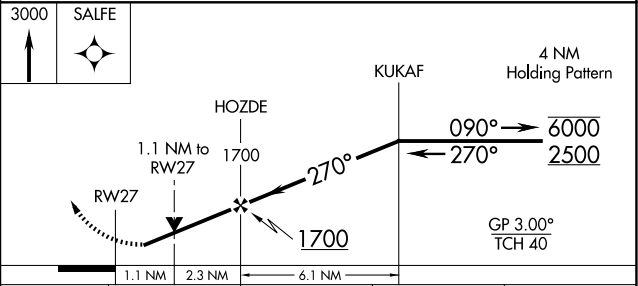
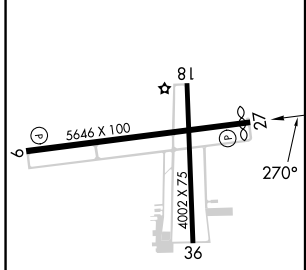
▼ Circling Rwy 18, 36 NA at night. Rwy 27 helicopter visibility reduction below 1 SM NA.
 ▲ For uncompensated Baro-VNAV systems, LNAV/VNAV NA below -16°C or above 54°C.

MISSED APPROACH:
 Climb to 3000 direct
 SALFE and hold.

AWOS-3 118.775	CLEVELAND APP CON 126.35 346.325	UNICOM 122.8 (CTAF) 0
--------------------------	--	---------------------------------



ELEV 590	TDZE 588
----------	----------



CATEGORY	A	B	C	D
LPV DA		842-1	254 (300-1)	
LNAV/VNAV DA		969-1½	381 (400-1½)	
LNAV MDA	980-1	392 (400-1)	980-1½	392 (400-1½)
CIRCLING	1140-1	550 (600-1)	1180-1½ 590 (600-1½)	1580-3 990 (1000-3)

HIRL Rwy 9-27 0
 MRL Rwy 18-36 0
 REL Rwy 9 and 27 0

EC-2, 14 MAY 2026 to 11 JUN 2026

EC-2, 14 MAY 2026 to 11 JUN 2026