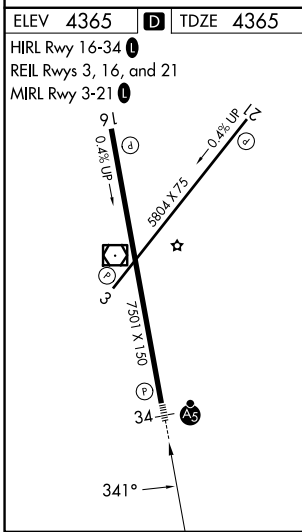
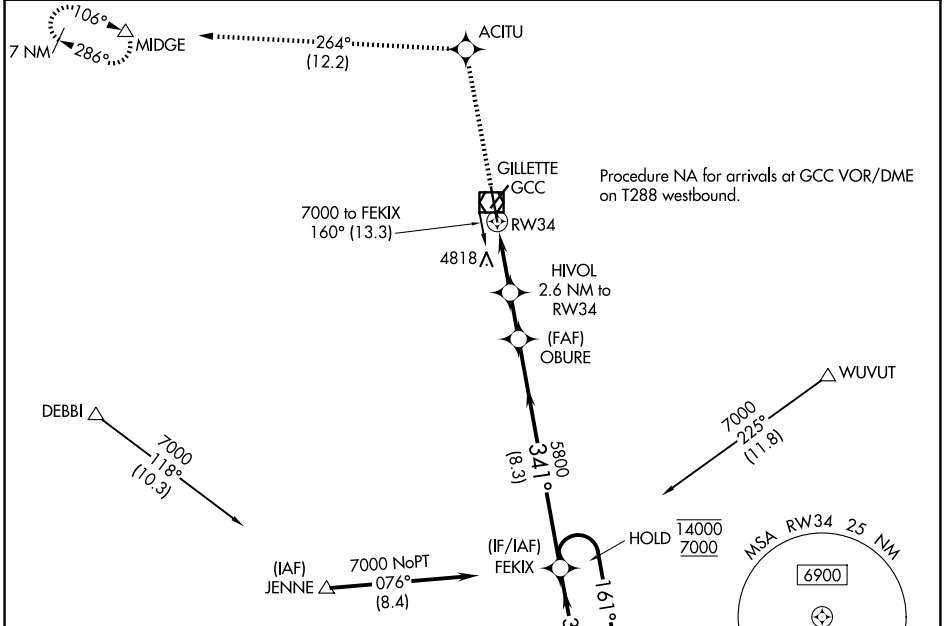


WAAS CH <b>86204</b> <b>W34A</b>	APP CRS <b>341°</b>	Rwy Ldg TDZE Apt Elev	<b>7500</b> <b>4365</b> <b>4365</b>
--	------------------------	-----------------------------	---

# RNAV (GPS) RWY 34

NORTHEAST WYOMING RGNL (GCC)

RNP APCH.		MALSRL	MISSED APPROACH: Climb to 7000 direct ACITU and on track 264° to MIDGE and hold.
<p><b>⚠</b> Circling Rwy 3 NA at night. Inop table does not apply to LPV and LNAV/VNAV. For uncompensated Baro-VNAV systems, LNAV/VNAV NA below -23°C or above 54°C. For inop ALS, increase LNAV Cat A visibility to 1 SM, and Cat C/D to 2 SM. Rwy 34 helicopter visibility reduction below ¾ SM NA.</p>			
ASOS <b>124.175</b>	DENVER CENTER <b>135.6 363.025</b>	UNICOM <b>122.95</b>	CTAF <b>118.5</b>



ELEV <b>4365</b>	<b>D</b>	TDZE <b>4365</b>
HIRL Rwy 16-34		
REIL Rwy 3, 16, and 21		
MIRL Rwy 3-21		
7000	ACITU	MIDGE
↑	⬠	△
*LNAV only.		VGSI and RNAV glidepath not coincident. (VGSI Angle 3.20/TCH 56)
HIVOL 2.6 NM to RW34	OBURE	FEKIX
*2.1 NM to RW34	5800	7 NM Holding Pattern
RW34	5240*	14000 7000
-2.1 NM	0.5	1.7 NM
GP 3.00°		TCH 52
CATEGORY	A	B
LPV DA	4620-¾	255 (300-¾)
LNAV/VNAV DA	5480-4	1115 (1200-4)
LNAV MDA	5120-¾	755 (800-¾)
CIRCLING	5120-1 755 (800-1)	5240-1¼ 875 (900-1¼)

NW-1, 14 MAY 2026 to 11 JUN 2026

NW-1, 14 MAY 2026 to 11 JUN 2026