

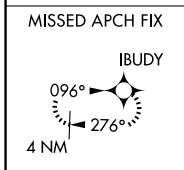
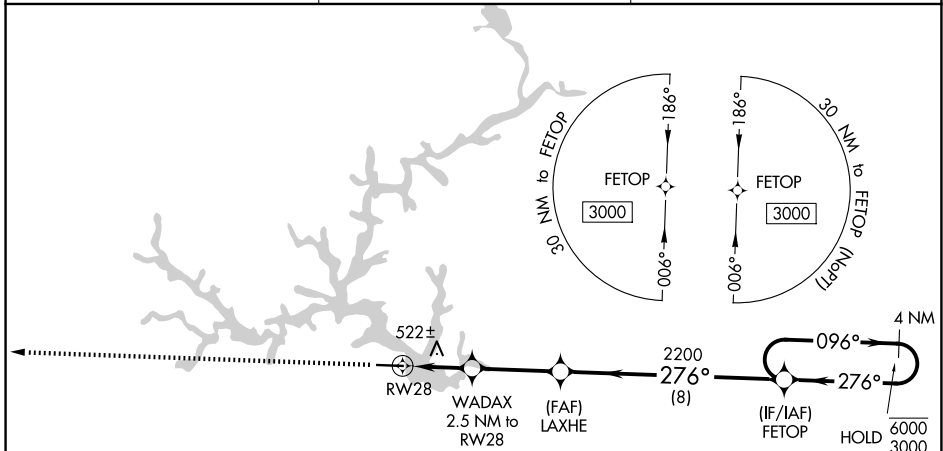
WAAS CH 82318 W28A	APP CRS 276°	Rwy Ldg TDZE Apt Elev	5424 379 385
--	------------------------	-----------------------------	---

RNAV (GPS) RWY 28

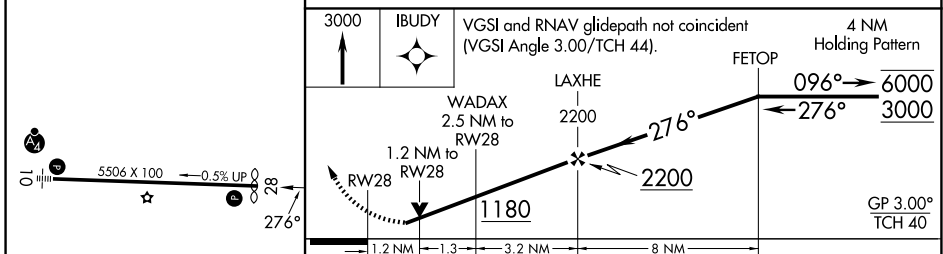
BALDWIN COUNTY RGNL (MLJ)

RNP APCH-GPS.	MISSED APPROACH: Climb to 3000 direct IBUDY and hold.
<p>▼</p> <p>▲ Rwy 28 helicopter visibility reduction below ¾ SM NA. For uncompensated Baro-VNAV systems, LNAV/VNAV NA below -15°C or above 54°C.</p>	

AWOS-3 120.925	ATLANTA APP CON ★ 124.2 279.6	UNICOM 122.975 (CTAF) ①
--------------------------	---	-----------------------------------



ELEV 385	D	TDZE 379
----------	----------	----------



CATEGORY	A	B	C	D
LPV DA	680-1 301 (300-1)			
LNAV/VNAV DA	830-1 ³ / ₈ 451 (500-1 ³ / ₈)			
LNAV MDA	780-1	401 (400-1)	780-1 ¹ / ₈	401 (400-1 ¹ / ₈)
CIRCLING	900-1 515 (600-1)	940-1 555 (600-1)	1080-2 695 (700-2)	1280-3 895 (900-3)

SE-4, 14 MAY 2026 to 11 JUN 2026

SE-4, 14 MAY 2026 to 11 JUN 2026