

TULLAHOMA, TENNESSEE

RNAV (GPS) RWY 21

APCH CRS	Rwy Idg	6001
207°	TDZE	1065
	Arprt Elev	1065

(USAF)

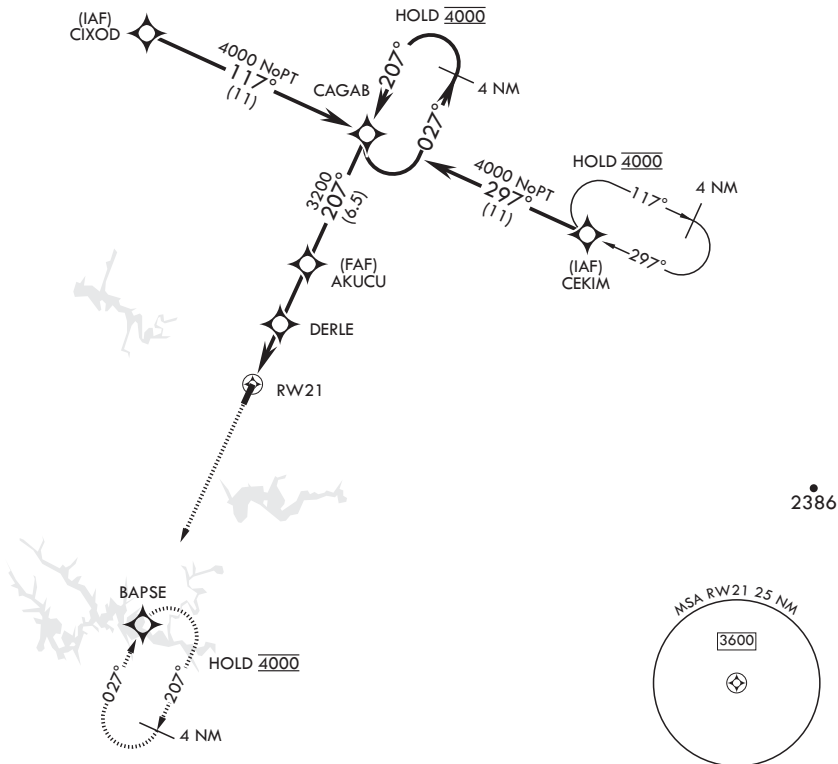
ARNOLD AFB (KAYX)

RNP APCH

MISSED APPROACH: Climb to 4000 direct BAPSE and hold.

* Circling not authorized NW of RWY 3-21.

UNICOM
126.2 (CTAF) 257.975 (CTAF)



EMERG SAFE ALT 100 NM 5800

4000 ↑	BAPSE 		ELEV 1065	TDZE 1065 /207°
		† DERLE to RWY 21 $\dagger \leq 3.44^\circ$ TCH 50		
CATEGORY	A	B	C	D
RNAV MDA	1480-1 415 (500-1)	1620-1 415 (500-1)	1480-1 1/8 415 (500-1)	1800-2 1/4 415 (500-1)
CIRCLING*	1520-1 455 (500-1)	1620-1 555 (600-1)	1640-1 1/2 575 (600-1 1/2)	1800-2 1/4 735 (800-2 1/4)

HIRL all Rwy's
REIL all Rwy's

TULLAHOMA, TENNESSEE

35°24'N - 86°05'W

ARNOLD AFB (KAYX)

Orig 19MAY22

RNAV (GPS) RWY 21

SE-1, 14 MAY 2026 to 11 JUN 2026

SE-1, 14 MAY 2026 to 11 JUN 2026