

TULLAHOA, TENNESSEE

RNAV (GPS) RWY 3

| | | |
|----------|------------|------|
| APCH CRS | Rwy Idg | 6001 |
| 027° | TDZE | 1065 |
| | Arprt Elev | 1065 |

- (USAF)

ARNOLD AFB (KAYX)

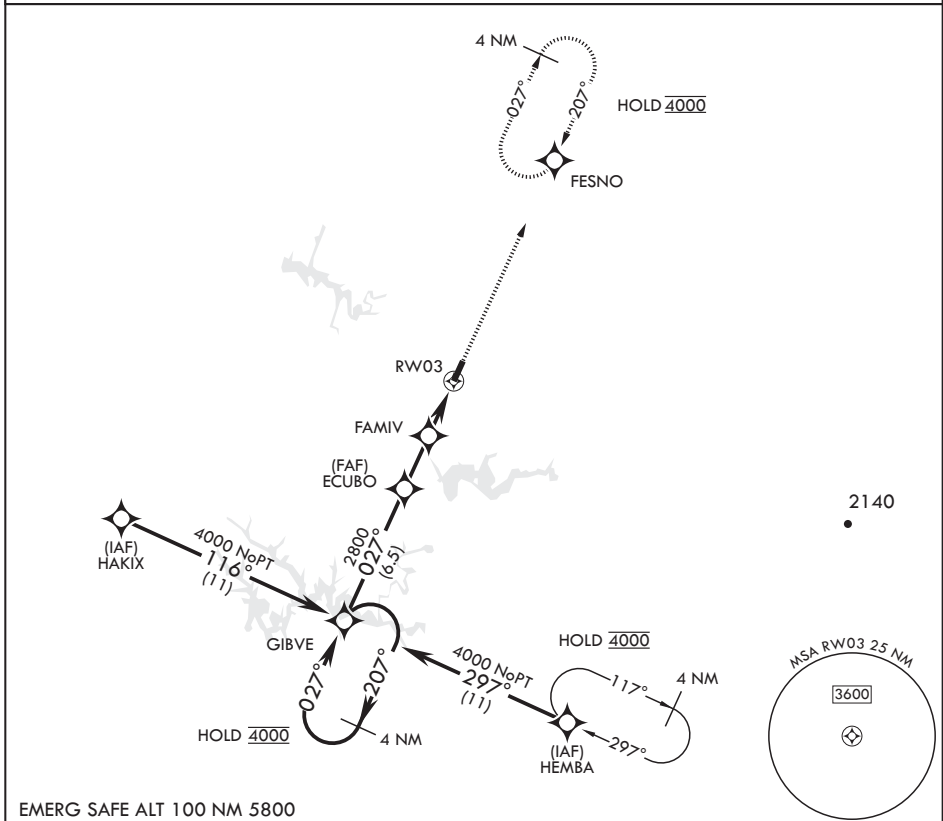
RNP APCH

MISSED APPROACH: Climb to 4000 direct FESNO and hold, continue climb-in-hold to 4000.

* Circling not authorized NW of RWY 3-21.

UNICOM

126.2 (CTAF) 257.975 (CTAF)



EMERG SAFE ALT 100 NM 5800

| | | | | |
|--|---|------------------------|-------------------------|-------------------------|
| 4000 4000 † FAMIV to RW03 3.12° ≥ † TCH 40 | 4000 FESNO ELEV 1065 TDZE 1065 | | | |
| | 4000 HOLD PATTERN: GIBVE (027°/207°), ECUBO (027°), FAMIV (027°), RW03 (1 NM to RW03) | | | |
| 2.6 NM (GIBVE to ECUBO) | | 2.7 NM (ECUBO to RW03) | | |
| CATEGORY | A | B | C | D |
| RNAV MDA | 1420-1 | 355 | (400-1) | |
| CIRCLING* | 1520-1 455 (500-1) | 1620-1 555 (600-1) | 1640-1½ 575 (600-1½) | 1800-2¼ 735 (800-2¼) |

TULLAHOA, TENNESSEE

35°24'N - 86°05'W

ARNOLD AFB (KAYX)

Orig 19MAY22

RNAV (GPS) RWY 3

SE-1, 14 MAY 2026 to 11 JUN 2026

SE-1, 14 MAY 2026 to 11 JUN 2026

HIRL all Rwys
REIL all Rwys