

LOC I-EYE 111.5	APP CRS 211°	Rwy Ldg 4200
		TDZE 823
		Apt Elev 823

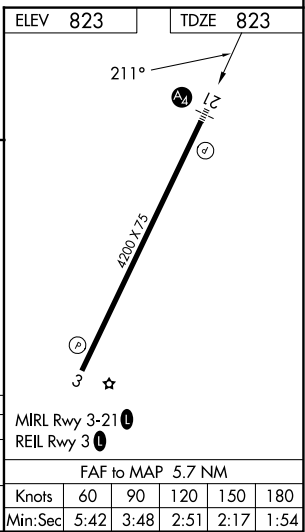
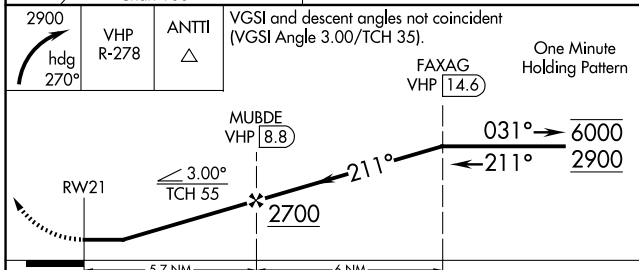
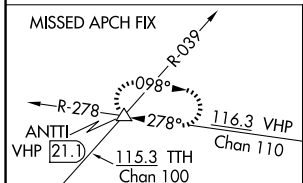
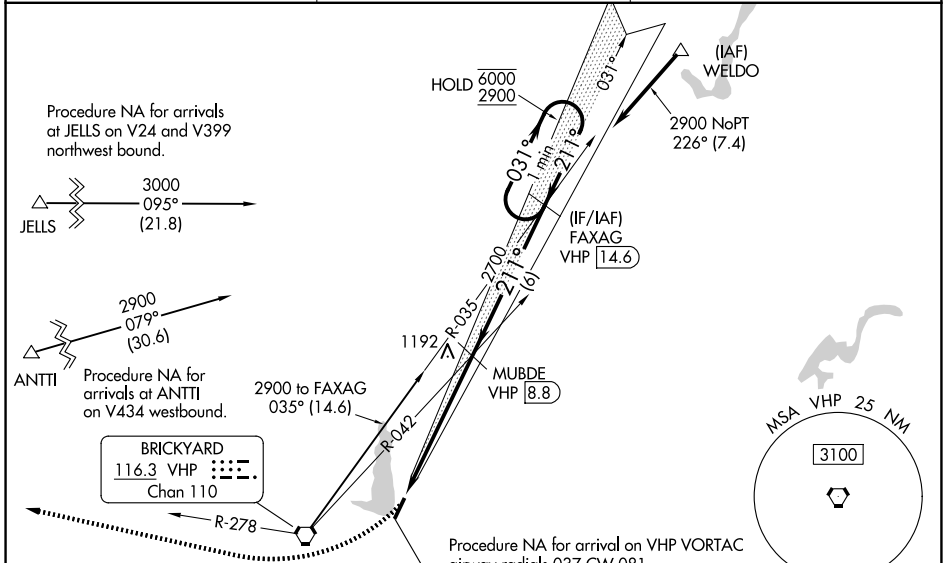
LOC RWY 21

EAGLE CREEK AIRPARK (EYE)

RNP APCH - GPS. From ANTTI or JELLS or WELDO.
 DME Required.
 Rwy 21 helicopter visibility reduction below 3/4 SM NA. Inop table does not apply to S-21 Cats A and B. When local altimeter setting not received, use Indianapolis Intl altimeter setting and increase all MDAs 20 feet. For inop ALS, increase Cat C visibility to 1 1/2 SM.

MALS MISSED APPROACH: Climbing right turn to 2900 on heading 270° and VHP R-278 to ANTTI INT/VHP 21.1 DME and hold.

ASOS 121.575	INDIANAPOLIS APP CON 119.05 317.8	UNICOM 122.8 (CTAF)
------------------------	---	-------------------------------



EC-2, 14 MAY 2026 to 11 JUN 2026

EC-2, 14 MAY 2026 to 11 JUN 2026