

WAAS CH <b>72619</b> <b>W18A</b>	APP CRS <b>183°</b>	Rwy Ldg TDZE <b>173</b> Apt Elev <b>173</b>	<b>5404</b>
--	------------------------	---	-------------

# RNAV (GPS) RWY 18

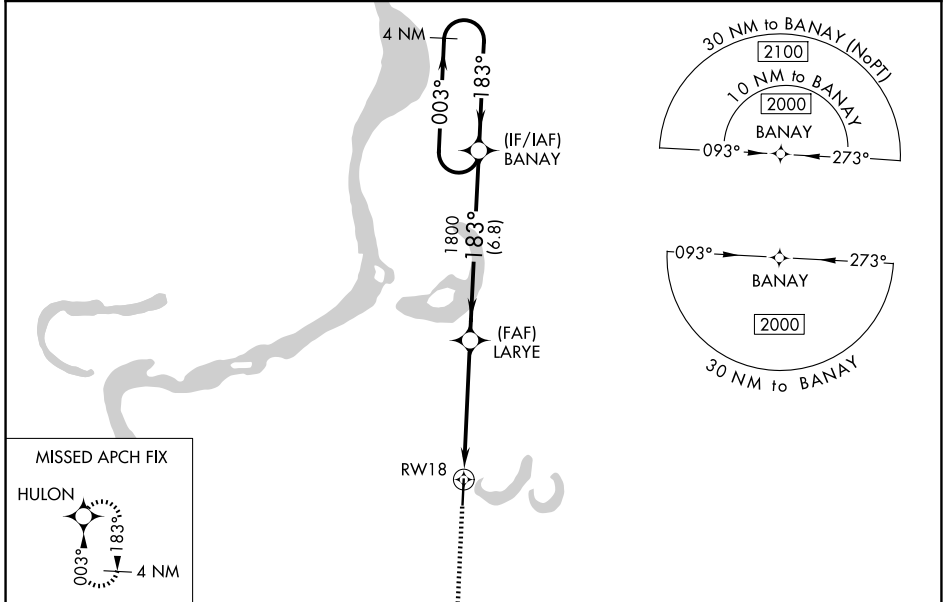
FLETCHER FLD (CKM)

RNP APCH-GPS.

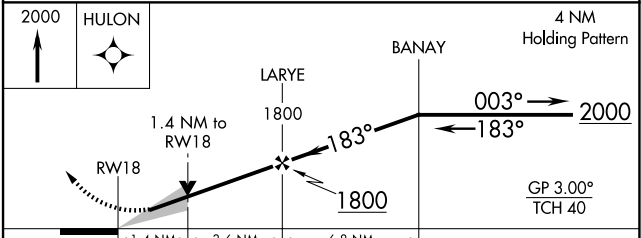
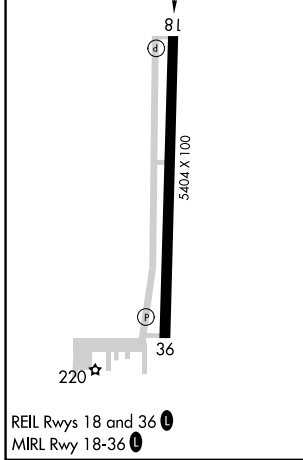
**⚠** For uncompensated Baro-VNAV systems, LNAV/VNAV NA below -15°C or above 54°C. Baro-VNAV and VDP NA when using Tunica altimeter setting. When local altimeter setting not received, use Tunica altimeter setting: increase LPV DA to 483 feet, LNAV/VNAV DA to 647 feet and all MDA 60 feet; increase LPV all Cats visibility 1/8 SM, LNAV/VNAV all Cats visibility 1/4 SM, and LNAV Cat C/D visibility 1/8 SM. Circling Rwy 36 NA at night.

**MISSED APPROACH:**  
Climb to 2000 direct HULON and hold.

AWOS-3 <b>120.675</b>	MEMPHIS CENTER <b>135.3 335.8</b>	UNICOM <b>122.8 (CTAF) 0</b>
--------------------------	--------------------------------------	---------------------------------



ELEV <b>173</b>	TDZE <b>173</b>
-----------------	-----------------



CATEGORY	A	B	C	D
LPV DA		423-7/8	250 (300-7/8)	
LNAV/VNAV DA		587-13/8	414 (500-13/8)	
LNAV MDA	640-1	467 (500-1)	640-13/8	467 (500-13/8)
CIRCLING	740-1	567 (600-1)	780-13/4	780-2 607 (700-13/4)

SC-4, 14 MAY 2026 to 11 JUN 2026

SC-4, 14 MAY 2026 to 11 JUN 2026