

WAAS CH 87140 W03A	APP CRS 029°	Rwy Ldg TDZE Apt Elev	5000 349 364
--	------------------------	-----------------------------	---

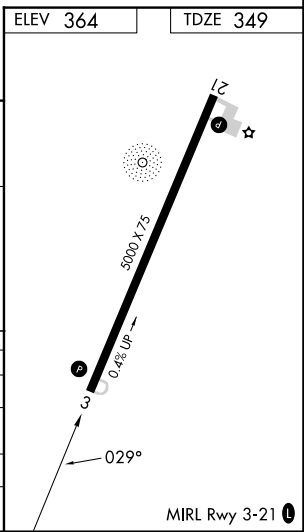
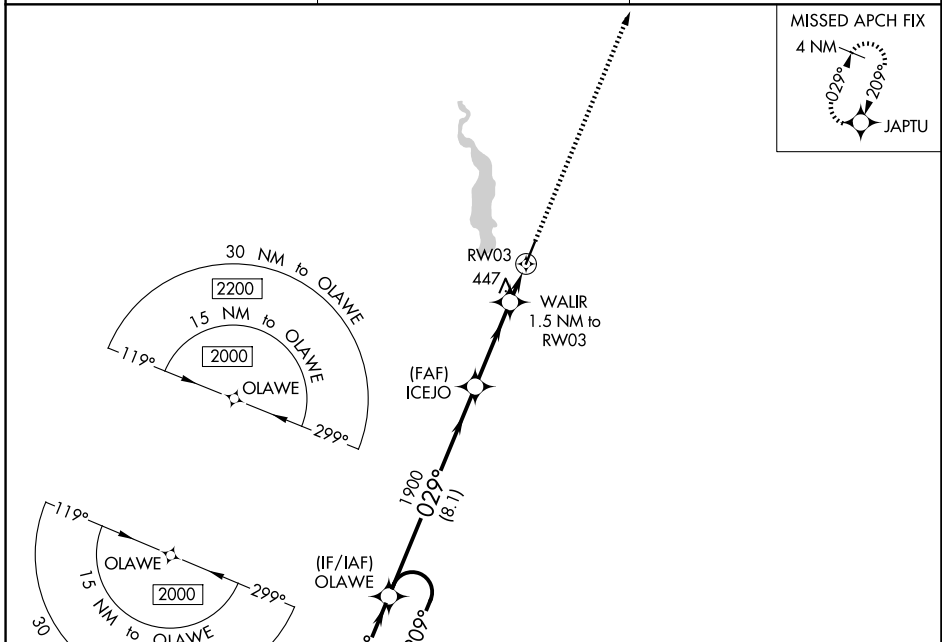
RNAV (GPS) RWY 3

HARTSVILLE RGNL (HVS)

▼ For uncompensated Baro-VNAV systems, LNAV/VNAV NA below -9°C (15°F) or above 54°C (130°F). DME/DME RNP-0.3 NA.

MISSED APPROACH: Climb to 2100 direct JAPTU and hold.

AWOS-3 118.225	SHAW APP CON ★ 125.4 318.1	UNICOM 122.8 (CTAF) 0
--------------------------	--------------------------------------	---------------------------------



4 NM Holding Pattern OLAWE VGSIs and RNAV glidepath not coincident (VGSi Angle 3.00/TCH28).

2000	← 209°	→ 029°	ICEJO	1900	WALIR	1.5 NM to RWY 3	RWY 3	2100	JAPTU
GP 3.00° TCH 40		1900		*860				*LNAV only.	
		8.1 NM		3.3 NM		1.5 NM			

CATEGORY	A	B	C	D
LPV DA	599-1	250 (300-1)		NA
LNAV/VNAV DA	599-1	250 (300-1)		NA
LNAV MDA	700-1	351 (400-1)		NA
CIRCLING	800-1 436 (500-1)	840-1 476 (500-1)	960-1½ 596 (600-1½)	NA

SE-2, 14 MAY 2026 to 11 JUN 2026

SE-2, 14 MAY 2026 to 11 JUN 2026