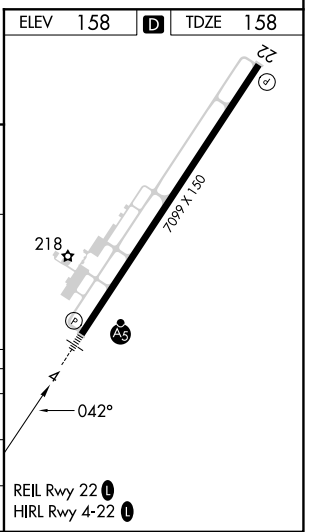
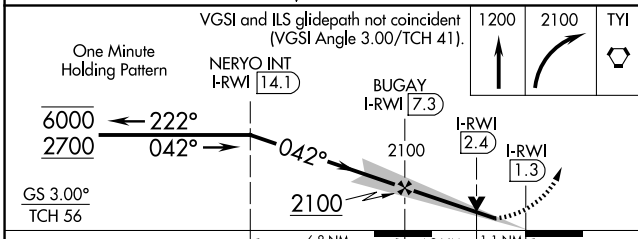
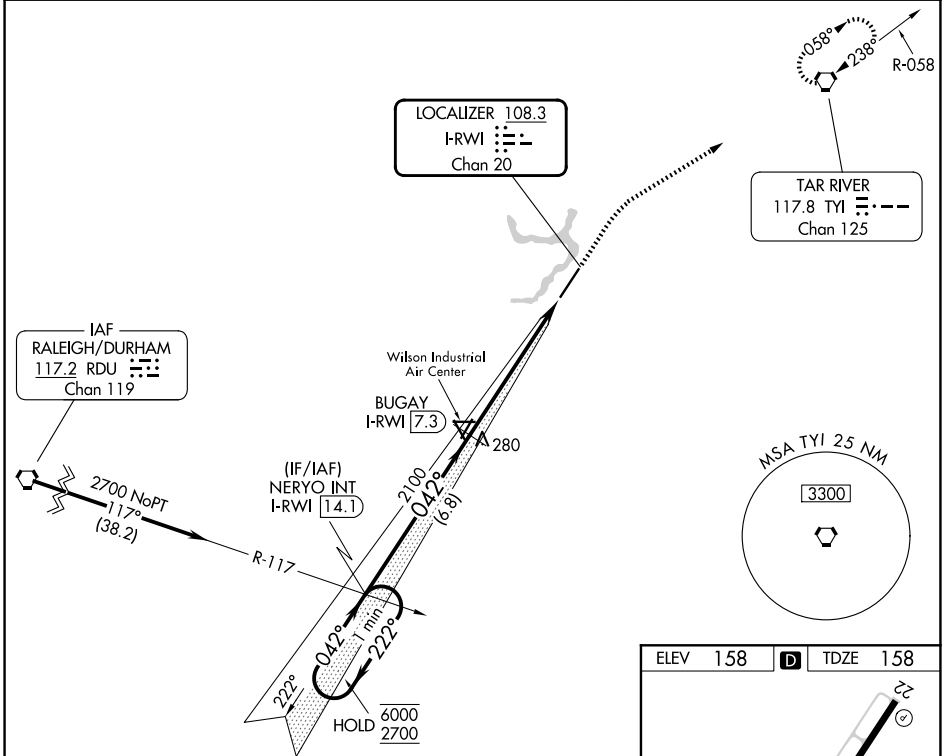


LOC/DME I-RWI <b>108.3</b> Chan 20	APP CRS <b>042°</b>	Rwy Ldg TDZE Apt Elev	<b>7099</b> <b>158</b> <b>158</b>
--	------------------------	-----------------------------	---

**ILS or LOC RWY 4**  
ROCKY MOUNT/WILSON RGNL (R.WI)

DME required for LOC only.		MALSRL	MISSED APPROACH: Climb to 1200 then climbing right turn to 2100 direct TYI VORTAC and hold.
----------------------------	--	--------	---

ASOS <b>118.875</b>	WASHINGTON CENTER <b>123.85 279.65</b>	UNICOM <b>123.05 (CTAF)</b>
------------------------	---	--------------------------------



CATEGORY	A	B	C	D
S-ILS 4		408-1/2	250 (300-1/2)	
S-LOC 4	540-1/2	382 (400-1/2)	540-5/8	382 (400-5/8)
CIRCLING	600-1 442 (500-1)	620-1 462 (500-1)	720-1 1/2 562 (600-1 1/2)	740-2 582 (600-2)

SE-2, 14 MAY 2026 to 11 JUN 2026

SE-2, 14 MAY 2026 to 11 JUN 2026