

WAAS CH 58035 W09A	APP CRS 095°	Rwy Ldg 10499 TDZE 13 Apt Elev 13
--	------------------------	--

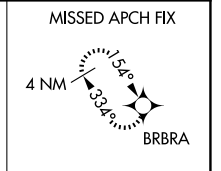
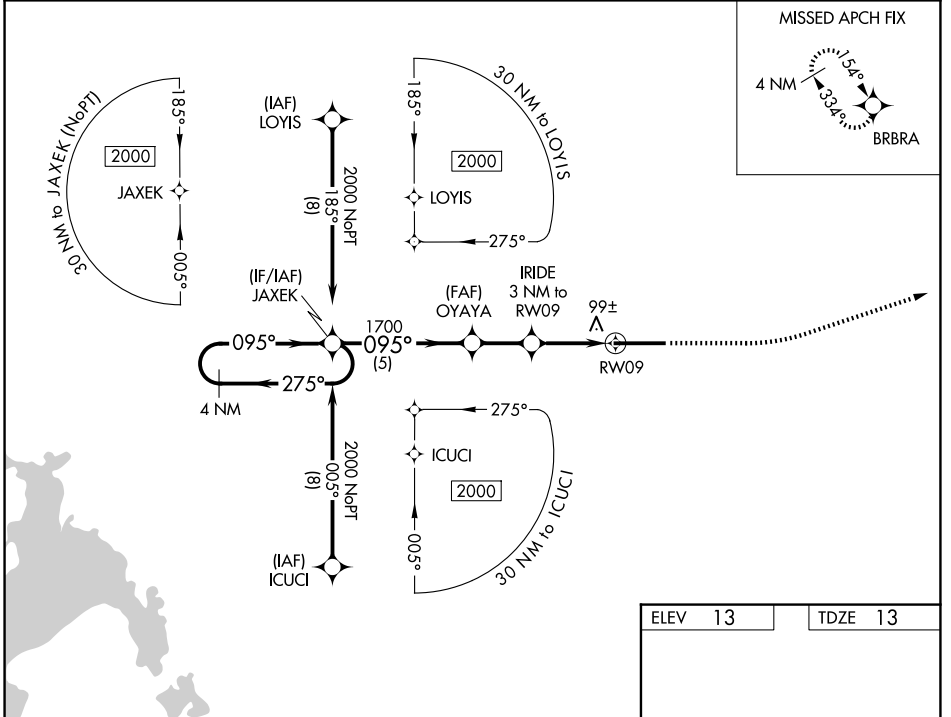
RNAV (GPS) RWY 9

DADE-COLLIER TRAINING AND TRANSITION (TNT)

▲NA Baro-VNAV NA when using Miami Executive altimeter setting. For uncompensated Baro-VNAV systems, LNAV/VNAV NA below -15°C (5°F) or above 54°C (130°F). Rwy 9 helicopter visibility reduction below 1 SM NA. DME/DME RNP-0,3 NA. Procedure NA at night. When local altimeter setting not received, use Miami Executive altimeter setting and increase LPV DA to 279 feet; increase LNAV/VNAV DA to 346; and increase all MDA 80 feet; increase LNAV Cats C and D visibility 1/4 SM.

MISSED APPROACH: Climb to 1000 then climbing left turn to 2000 direct BRBRA and hold.

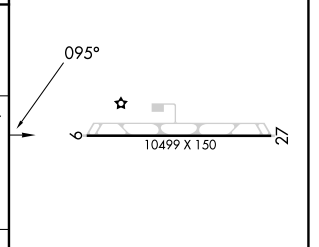
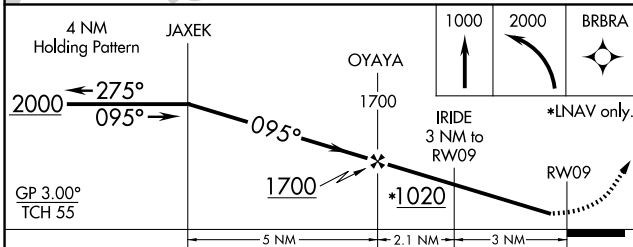
AWOS-3 119.075	MIAMI APP CON 128.6 306.975	UNICOM 123.0 (CTAF)
--------------------------	---------------------------------------	-------------------------------



SE-3, 14 MAY 2026 to 11 JUN 2026

SE-3, 14 MAY 2026 to 11 JUN 2026

ELEV 13	TDZE 13
---------	---------



CATEGORY	A	B	C	D
LPV DA		213-1	200 (200-1)	
LNAV/VNAV DA		280-1	267 (300-1)	
LNAV MDA		360-1	347 (400-1)	
CIRCLING	400-1	480-1	480-1 1/2	580-2
	387 (400-1)	467 (500-1)	467 (500-1 1/2)	567 (600-2)

HIRL Rwy 9-27