

# RNAV (GPS) RWY 25

MONROE COUNTY (4G5)

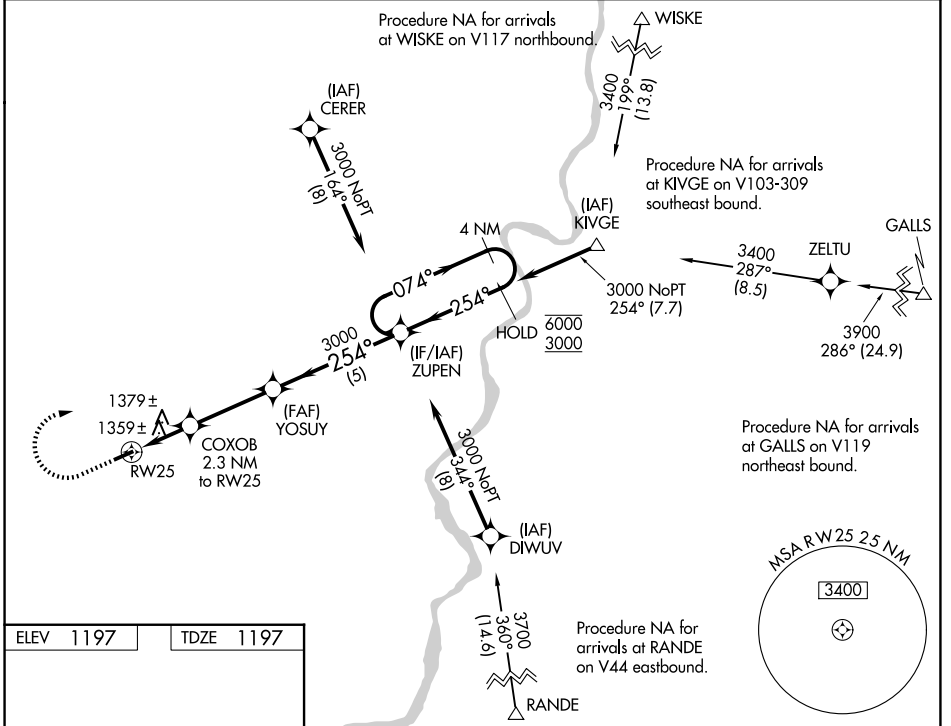
WAAS CH <b>65833</b> <b>W25A</b>	APP CRS <b>254°</b>	Rwy Ldg TDZE <b>1197</b> Apt Elev <b>1197</b>	<b>3805</b>
----------------------------------------	------------------------	-----------------------------------------------------	-------------

RNP APCH.

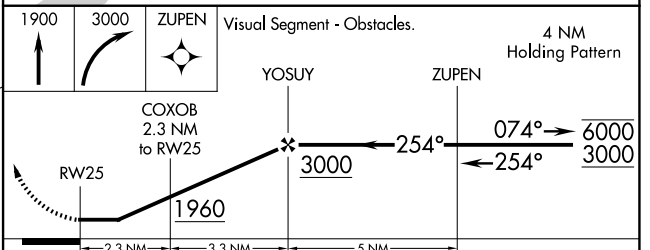
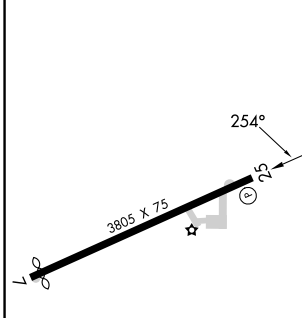
**NA** Rwy 25 helicopter visibility reduction below 1 SM NA. Use Wheeling Ohio Co, WV altimeter setting; when not received use Parkersburg, WV altimeter setting and increase all MDA 60 feet; increase LP Cat C, LNAV Cat C and Circling Cat C visibility  $\frac{1}{4}$  SM. Procedure NA at night.

MISSED APPROACH: Climb to 1900 then climbing right turn to 3000 direct ZUPEN and hold.

CLEVELAND CENTER <b>126.95 239.3</b>	UNICOM <b>122.8 (CTAF)</b>
-----------------------------------------	-------------------------------



ELEV 1197	TDZE 1197
-----------	-----------



CATEGORY	A	B	C	D
LP MDA	1700-1	503 (600-1)	1700-1 $\frac{3}{8}$ 503 (600-1 $\frac{3}{8}$ )	NA
LNAV MDA	1720-1	523 (600-1)	1720-1 $\frac{1}{2}$ 523 (600-1 $\frac{1}{2}$ )	NA
CIRCLING	1860-1	663 (700-1)	1860-1 $\frac{3}{4}$ 663 (700-1 $\frac{3}{4}$ )	NA

REIL Rwy 25 **1**  
MIRL Rwy 7-25 **1**

EC-2, 14 MAY 2026 to 11 JUN 2026

EC-2, 14 MAY 2026 to 11 JUN 2026