

WAAS CH <b>81926</b> <b>W15A</b>	APP CRS <b>149°</b>	Rwy ldg TDZE Apt Elev	<b>5000</b> <b>327</b> <b>336</b>
--	------------------------	-----------------------------	---

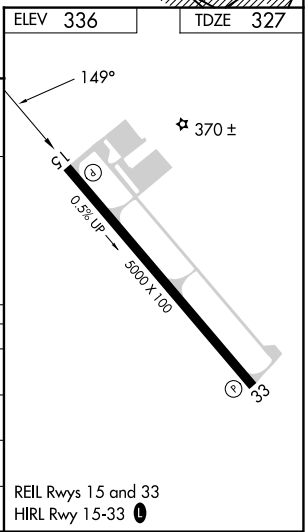
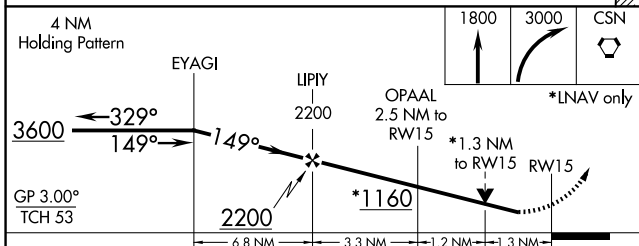
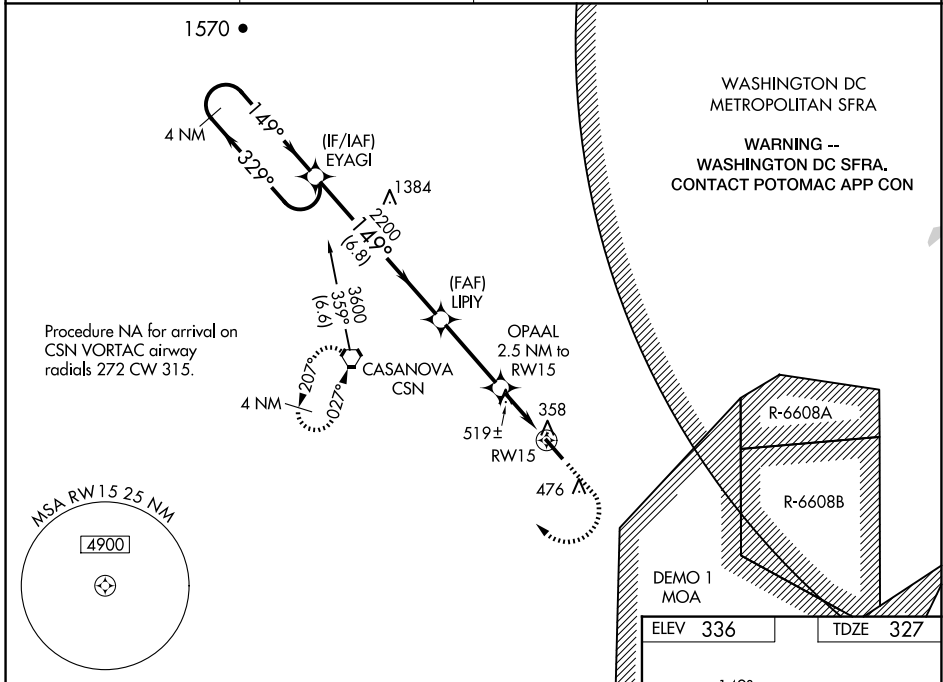
# RNAV (GPS) RWY 15

WARRENTON/FAUQUIER (HWY)

**⚠** Baro-VNAV NA when using Culppeper altimeter setting. For uncompensated Baro-VNAV systems, LNAV/VNAV NA below -11°C (13°F) or above 41°C (105°F). DME/DME RNP-0.3 NA. Helicopter visibility reduction below 3/4 SM NA. When local altimeter setting not received, use Culppeper altimeter setting: increase LPV DA to 549 feet; increase LNAV/VNAV DA to 607 feet and all visibilities 1/8 SM; increase all MDAs 40 feet and Circling Cat D visibility 1/4 SM.

**⚠** MISSED APPROACH: Climb to 1800 then climbing right turn to 3000 direct CSN VORTAC and hold.

AWOS-3 <b>120.35</b>	CJR AWOS-3 <b>119.325</b>	POTOMAC APP CON <b>128.525 306.925</b>	UNICOM <b>122.7 (CTAF) 0</b>
-------------------------	------------------------------	---	---------------------------------



CATEGORY	A	B	C	D
LPV DA		527-3/4	200 (200-3/4)	
LNAV/VNAV DA		585-3/4	258 (300-3/4)	
LNAV MDA	780-1	453 (500-1)	780-1 3/8	453 (500-1 3/8)
CIRCLING	780-1 444 (500-1)	800-1 464 (500-1)	880-1 1/2 544 (600-1 1/2)	980-2 644 (700-2)

REIL Rwy 15 and 33  
HIRL Rwy 15-33 0

NE-3, 14 MAY 2026 to 11 JUN 2026

NE-3, 14 MAY 2026 to 11 JUN 2026