

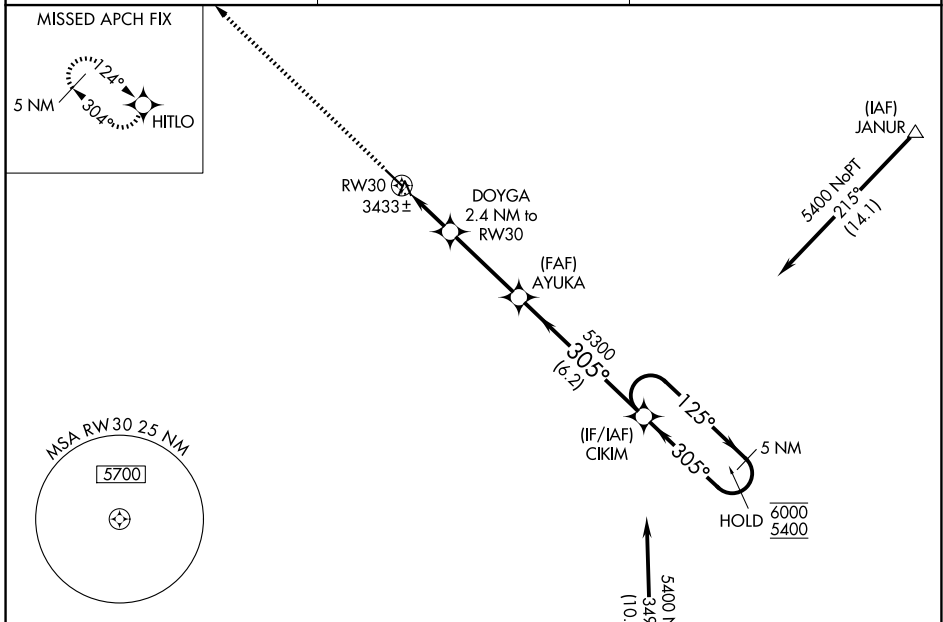
WAAS CH <b>93509</b> <b>W30A</b>	APP CRS <b>305°</b>	Rwy Ldg <b>4699</b> TDZE <b>3387</b> Apt Elev <b>3394</b>
--	------------------------	---

# RNAV (GPS) RWY 30

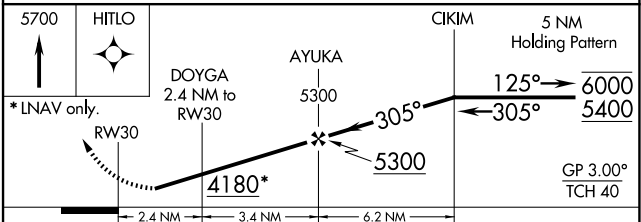
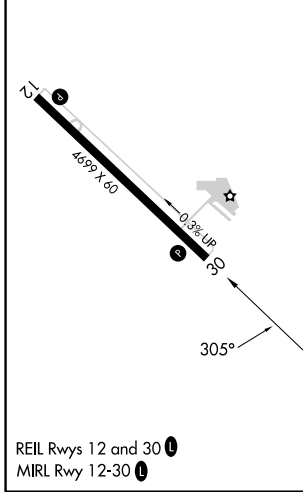
GARDEN COUNTY/KING RHILEY FLD (OKS)

RNP APCH.	MISSED APPROACH: Climb to 5700 direct HITLO and hold.
<p>▼ Rwy 30 helicopter visibility reduction below 3/4 SM NA. ▲ NA Baro-VNAV NA. Use Ogallala altimeter setting.</p>	

OGA AWOS-3 <b>121.275</b>	DENVER CENTER <b>118.475 225.4</b>	UNICOM <b>122.8 (CTAF) 0</b>
------------------------------	---------------------------------------	---------------------------------



ELEV <b>3394</b>	TDZE <b>3387</b>
------------------	------------------



CATEGORY	A	B	C	D
LPV DA	3734-1 1/4	347 (400-1 1/4)		NA
LNAV/VNAV DA	3792-1 1/2	405 (400-1 1/2)		NA
LNAV MDA	3880-1	493 (500-1)		NA
CIRCLING	3940-1 546 (600-1)	4180-1 786 (800-1)		NA

NC-2, 14 MAY 2026 to 11 JUN 2026

NC-2, 14 MAY 2026 to 11 JUN 2026