

WAAS CH 78045 W17A	APP CRS 172°	Rwy Ldg TDZE 3188 Apt Elev 3188
---------------------------------	------------------------	---

RNAV (GPS) RWY 17

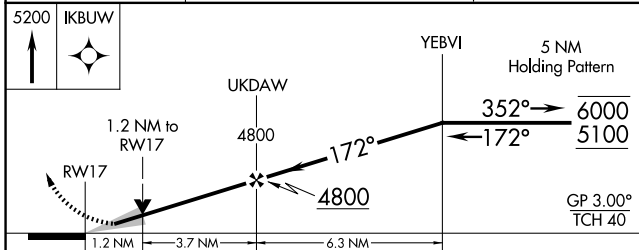
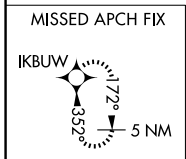
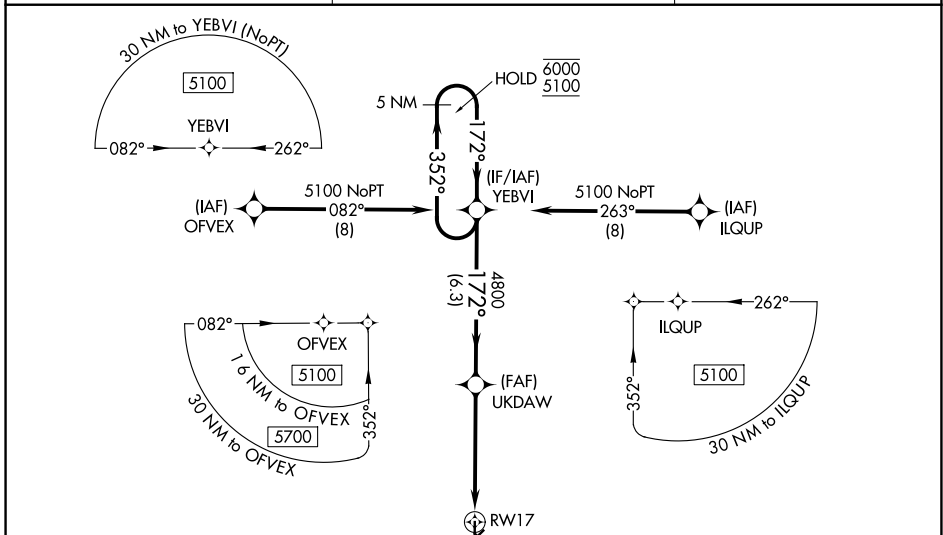
SHALZ FLD (CBK)

RNP APCH - GPS.

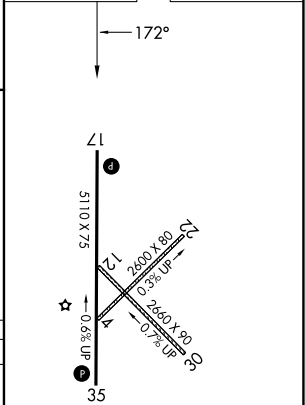
⚠ Baro-VNAV and VDP NA when using Oakley altimeter setting. For uncompensated Baro-VNAV systems, LNAV/VNAV NA below -21°C or above 54°C. When local altimeter setting not received, use Oakley altimeter setting: increase LPV DA to 3509 feet and all visibilities ¼ SM, LNAV/VNAV DA to 3509 feet and all visibilities ¼ SM; increase all MDAs 80 feet and visibility Cat C ¼ SM.

MISSED APPROACH: Climb to 5200 direct IKBW and hold.

AWOS-3P 118.175	DENVER CENTER 132.7 226.675	UNICOM 122.8 (CTAF) ①
---------------------------	---------------------------------------	---------------------------------



ELEV 3188	TDZE 3188
-----------	-----------



CATEGORY	A	B	C	D
LPV DA	3438-¾	250 (300-¾)		NA
LNAV/VNAV DA	3438-¾	250 (300-¾)		NA
LNAV MDA	3620-1	432 (500-1)	3620-1¼ 432 (500-1¼)	NA

MIRL Rwy 17-35 ①
REIL Rws 17 and 35 ①

NC-2, 14 MAY 2026 to 11 JUN 2026

NC-2, 14 MAY 2026 to 11 JUN 2026