

WAAS CH 81909 W35A	APP CRS 352°	Rwy Ldg TDZE 3176 Apt Elev 3188
--	------------------------	---

RNAV (GPS) RWY 35

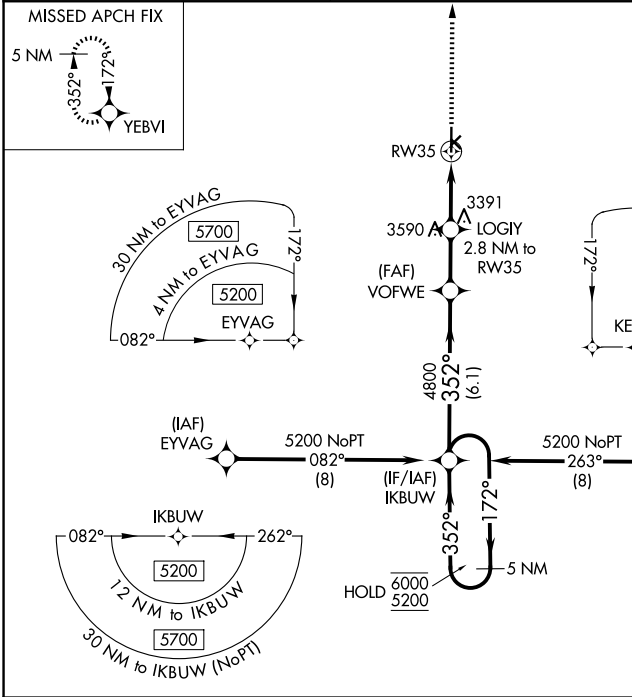
SHALZ FLD (CBK)

RNP APCH - GPS.

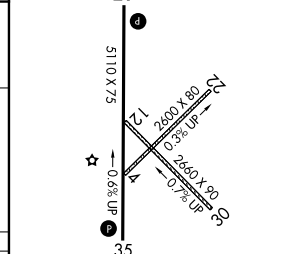
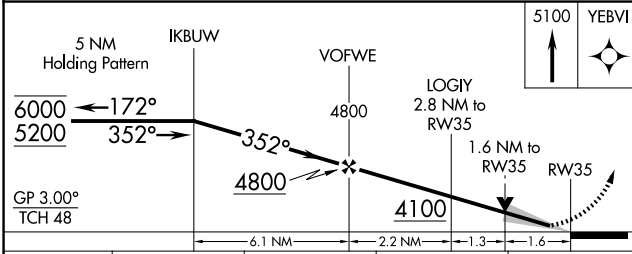
⚠ For uncompensated Baro-VNAV systems, LNAV/VNAV NA below -21°C or above 54°C. Baro-VNAV and VDP NA when using OEL altimeter setting. When local altimeter setting not received, use OEL altimeter setting and increase LPV DA to 3447 feet and all visibilities 1/8 SM. Increase LNAV/VNAV DA to 3497 feet and all visibilities 1/4 SM. Increase all MDAs 80 feet and LNAV visibility Cat C 1/4 SM.

MISSED APPROACH: Climb to 5100 direct YEBVI and hold.

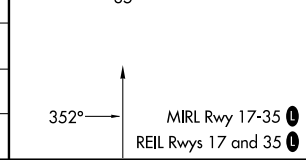
AWOS-3P 118.175	DENVER CENTER 132.7 226.675	UNICOM 122.8 (CTAF) ①
---------------------------	---------------------------------------	---------------------------------



ELEV 3188	TDZE 3176
-----------	-----------



CATEGORY	A	B	C	D
LPV DA	3376-3/4 200 (200-3/4)			NA
LNAV/VNAV DA	3426-3/4 250 (300-3/4)			NA
LNAV MDA	3700-1	524 (600-1)	3700-1 1/2 524 (600-1 1/2)	NA



NC-2, 14 MAY 2026 to 11 JUN 2026

NC-2, 14 MAY 2026 to 11 JUN 2026