

APP CRS <b>011°</b>	Rwy Ldg TDZE Apt Elev	<b>N/A</b> <b>N/A</b> <b>5</b>
------------------------	-----------------------------	--------------------------------------

# RNAV (GPS)-B

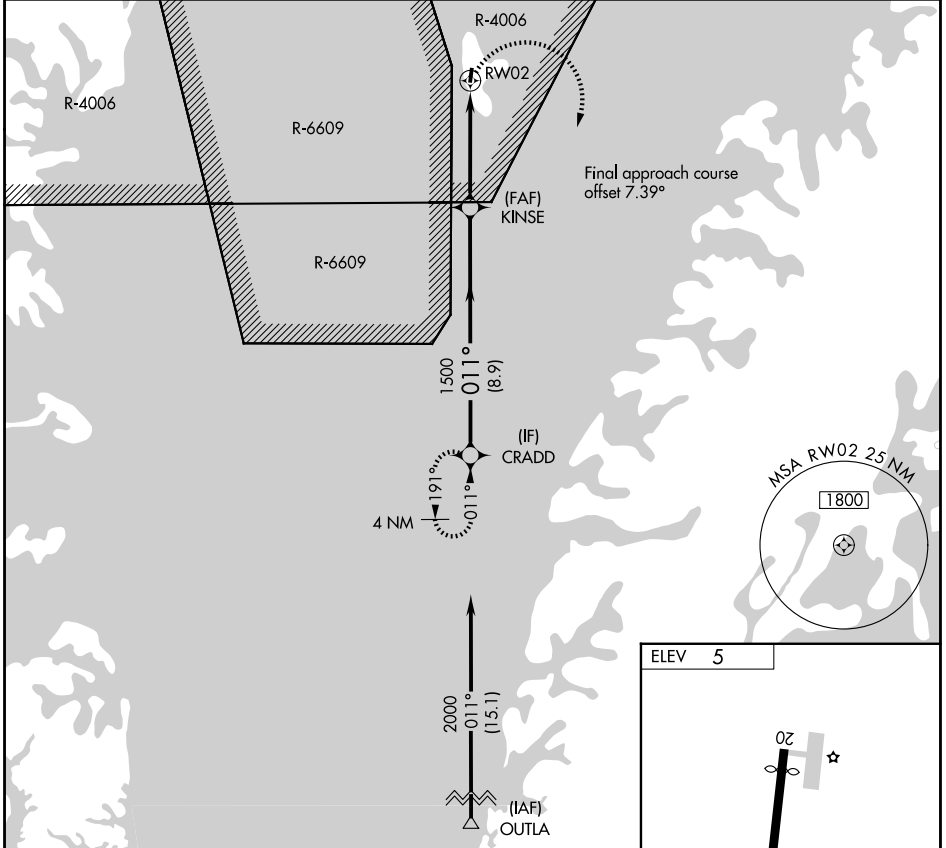
## TANGIER ISLAND (TGI)

RNP APCH - GPS.

**▼** Specific clearance from Patuxent App Con required before proceeding northbound from CRADD. Approach is within R-6609 and underlies R-4006. Procedure NA at night.

**MISSED APPROACH:**  
Climbing right turn to 2000  
direct CRADD and hold.

AWOS-3 <b>119.8</b>	PATUXENT APP CON ★ <b>121.0 250.3</b>	UNICOM <b>122.8 (CTAF)</b>
------------------------	--	-------------------------------



NE-3, 14 MAY 2026 to 11 JUN 2026

NE-3, 14 MAY 2026 to 11 JUN 2026

