

LOC/DME I-RBW <b>110.15</b> Chan 38 (Y)	APP CRS <b>229°</b>	Rwy Ldg TDZE <b>101</b> Apt Elev <b>101</b>	<b>5977</b>
---	------------------------	---	-------------

# ILS Y or LOC Y RWY 23

LOWCOUNTRY RGNL (R.B.W)

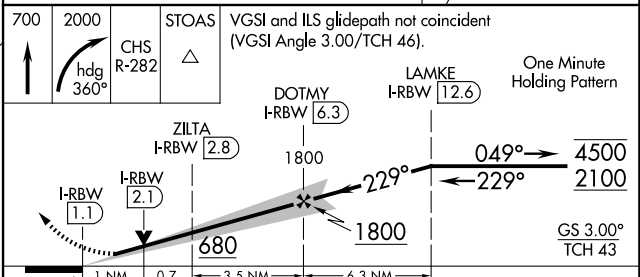
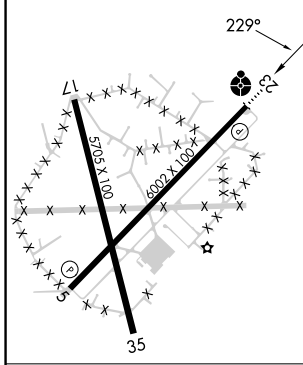
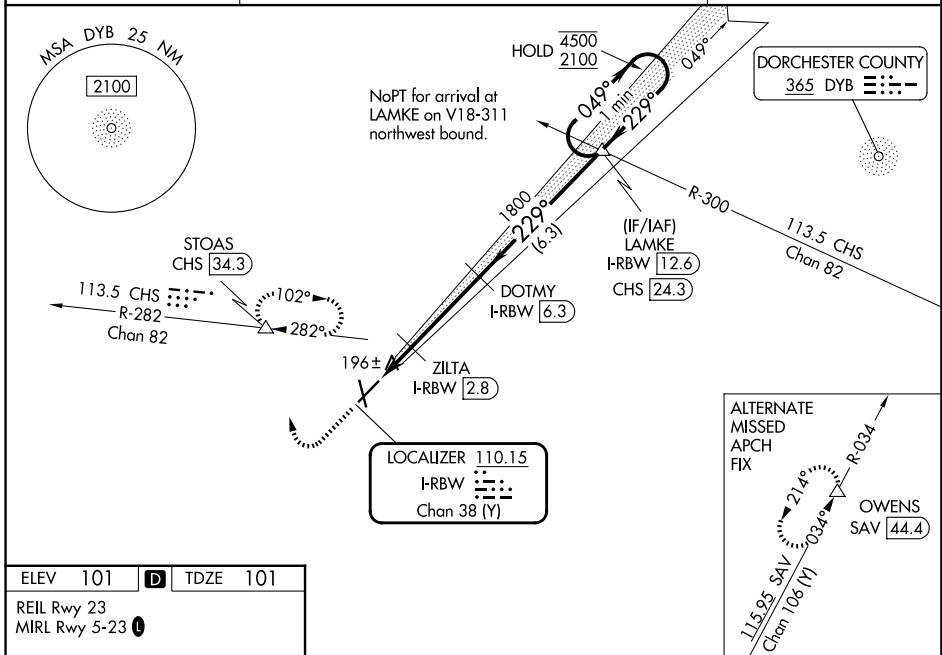
DME required.

**▼**  
**▲** Rwy 23 helicopter visibility reduction below ¾ SM NA. Inop table does not apply to S-LOC 23 all Cats.

ODALS

MISSED APPROACH: Climb to 700 then climbing right turn to 2000 on heading 360° and CHS VORTAC R-282 to STOAS/CHS VORTAC 34.3 DME and hold, continue climb-in-hold to 2000, or as directed by ATC.

AWOS-3PT <b>118.725</b>	CHARLESTON APP CON <b>120.7 306.925</b>	UNICOM <b>122.8 (CTAF)</b>
----------------------------	--	-------------------------------



FAF to MAP 5.2 NM

Knots	60	90	120	150	180
Min:Sec	5:12	3:28	2:36	2:05	1:44

CATEGORY	A	B	C	D
S-ILS 23	301-¾ 200 (200-¾)			
S-LOC 23	460-¾	359 (400-¾)	460-⅞	359 (400-⅞)
CIRCLING	620-1	519 (600-1)	700-1½ 599 (600-1½)	700-2 599 (600-2)

SE-2, 14 MAY 2026 to 11 JUN 2026

SE-2, 14 MAY 2026 to 11 JUN 2026