

LOC I-MCB <b>109.1</b>	APP CRS <b>157°</b>	Rwy Ldg 5000
		TDZE 413
		Apt Elev 413

# ILS or LOC RWY 16

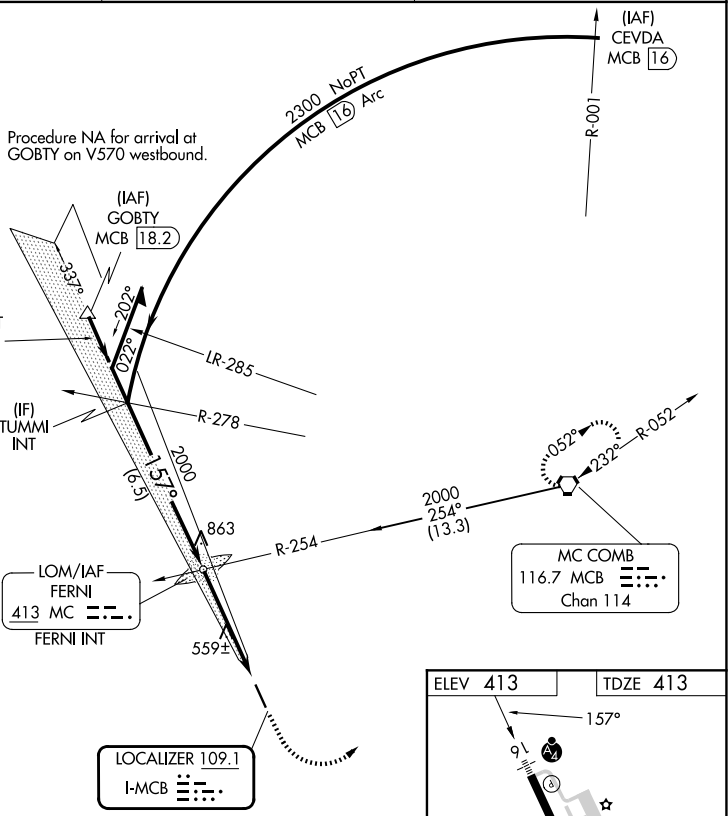
MC COMB/PIKE COUNTY/JOHN E LEWIS FLD (MCB)

<p><b>▼</b> Inop table does not apply to S-ILS 16 all Cats and S-LOC 16 Cats C and D.</p>	<p><b>MALSF</b></p>	<p>MISSED APPROACH: Climb to 1000 then climbing left turn to 2000 direct MCB VORTAC and hold.</p>
---	---------------------	---

ASOS <b>119.025</b>	HOUSTON CENTER <b>126.8 327.8</b>	UNICOM <b>123.05 (CTAF) 0</b>
------------------------	--------------------------------------	----------------------------------

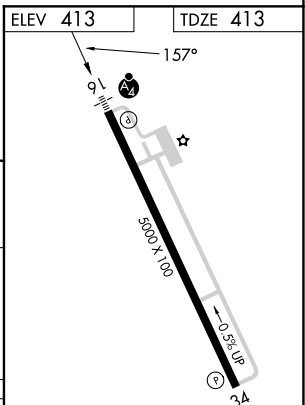
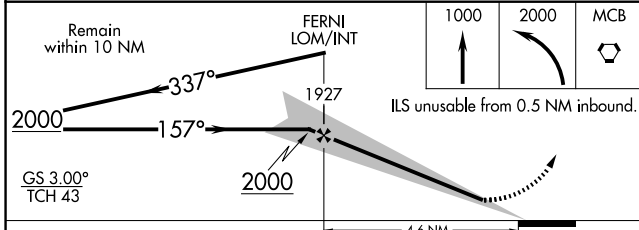
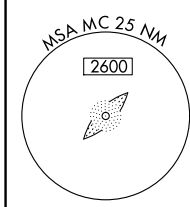
ALT MISSED APCH FIX

FERNI  
413 MC



SC-4, 14 MAY 2026 to 11 JUN 2026

SC-4, 14 MAY 2026 to 11 JUN 2026



	4.6 NM		
CATEGORY	A	B	C
S-ILS 16	632-3/4		219 (300-3/4)
S-LOC 16	820-3/4	407 (500-3/4)	820-1/4 407 (500-1/4)
CIRCLING	880-1	467 (500-1)	940-1/2 527 (600-1/2) 1160-2/2 747 (800-2/2)

MIRL Rwy 16-34 0					
FAF to MAP 4.1 NM					
Knots	60	90	120	150	180
Min:Sec	4:06	2:44	2:03	1:38	1:22