

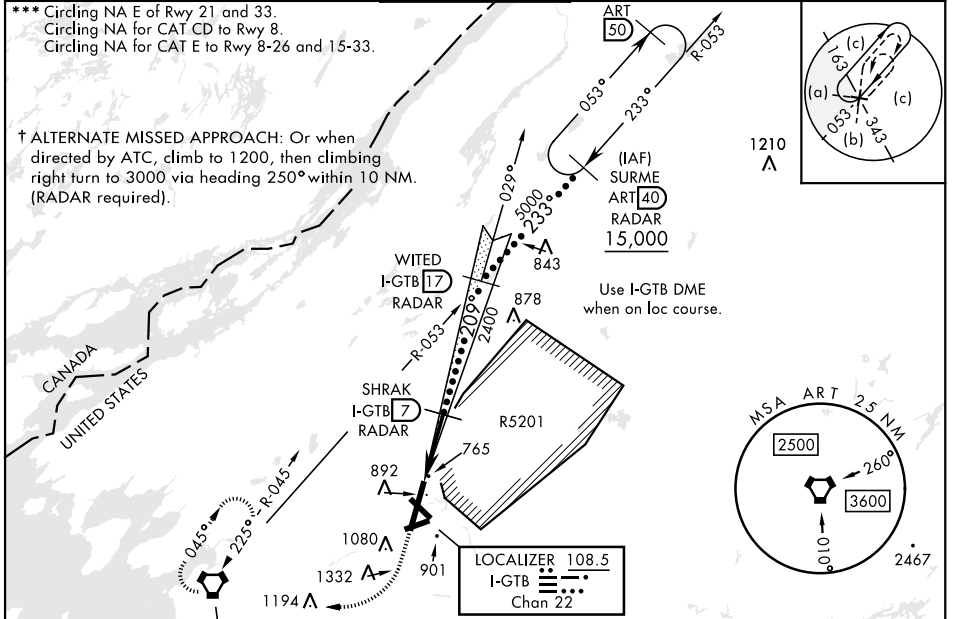
FORT DRUM, NEW YORK

# HI-ILS or LOC RWY 21

LOC/DME I-GTB <b>108.5</b> Chan <b>22</b>	APCH CRS <b>209°</b>	Rwy Idg <b>10,000</b> TDZE <b>677</b> Arpt Elev <b>690</b>	[USA]	WHEELER-SACK AAF (FORT DRUM) (KGTB)
---	-------------------------	--	-------	-------------------------------------

DME or RADAR required.		ALSIF-1 	† MISSED APPROACH: Climb to 1200, then climbing right turn to 5000 direct ART VORTAC and hold. Continue climb in hold to 5000.
* When ALS inop, increase vis to ¾ mile. ** When ALS inop, increase CAT C vis to 1 mile, CAT DE vis to 1¼ miles.			

ATIS <b>119.525</b>	APP CON <b>124.875 307.125</b>	TOWER <b>118.75 290.25</b>	GND CON <b>123.65 229.8</b>	ASR/PAR
------------------------	-----------------------------------	-------------------------------	--------------------------------	---------



ELEV 690	TDZE 677
209°	

1200

5000

ART

WITED I-GTB 17 RADAR

SHRAK I-GTB 7 RADAR

2400

5000

209°

2400

GS 3.00° TCH 63

5.2 NM

10000 x 150

0.53° UP

6900 x 150

4501 x 150

26

33

21

3

15

TWR

HIRL Rwy 3-21, 15-33

MIRL Rwy 8-26

RAIL Rwy 15

EMERG SAFE ALT 100 NM 7600	↑ 1200		↪ 5000	ART	
VGSI and ILS glidepath not coincident	I-GTB 1.8	I-GTB 2.7	2400	209°	
	5.2 NM		2400	GS 3.00° TCH 63	
CATEGORY	C	D	E		
S-ILS 21*	877-½	200	(200-½)		
S-LOC 21**	1040-¾	363	(400-¾)		
CIRCLING ***	1220-1½	1380-2¼	1640-3		
	530 (600-1½)	690 (700-2¼)	950 (1000-3)		
FAF to MAP 5.2 NM					
Knots	120	140	160	180	200
Min:Sec	2:36	2:14	1:57	1:44	1:34

FORT DRUM, NEW YORK 44°03'N-75°43'W WHEELER-SACK AAF (FORT DRUM) (KGTB)

# HI-ILS or LOC RWY 21

NE-2, 14 MAY 2026 to 11 JUN 2026

NE-2, 14 MAY 2026 to 11 JUN 2026

