

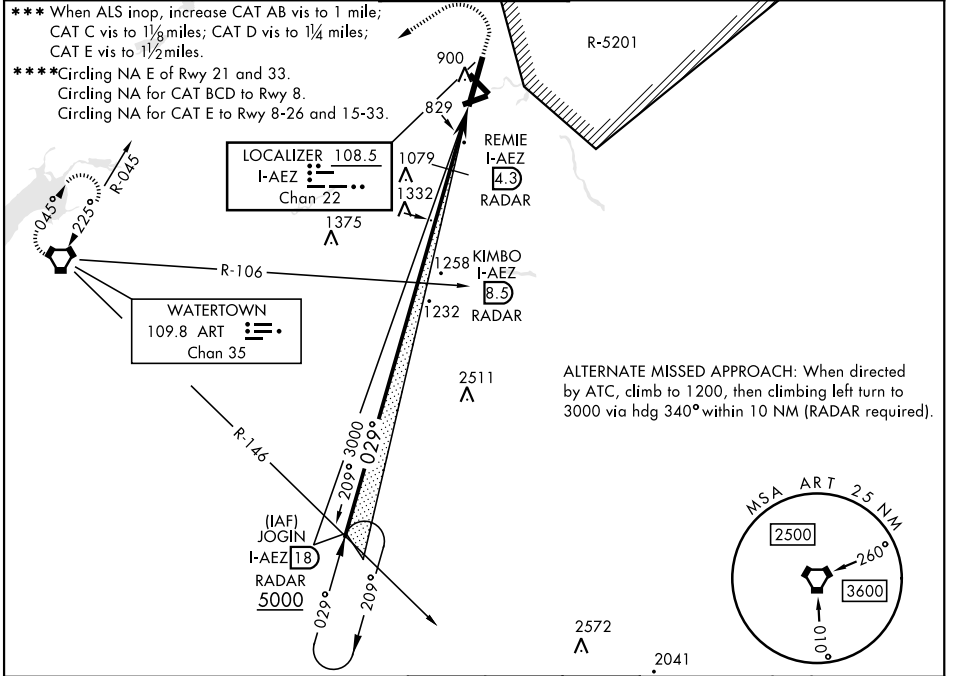
FORT DRUM, NEW YORK

ILS or LOC RWY 3

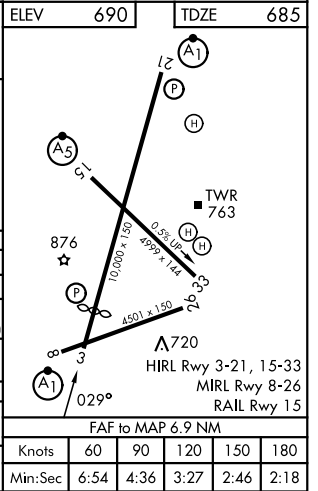
LOC/DME I-AEZ 108.5 Chan 22	APCH CRS 029°	Rwy Ldg TDZE Arpt Elev 8631 685 690	[USA]	WHEELER-SACK AAF (FORT DRUM) (KGTB)
---	-------------------------	---	-------	-------------------------------------

DME or RADAR required. RADAR required for procedure entry.	ALSIF-1 	MISSED APPROACH: Climb to 1200, then climbing left turn to 5000 direct ART VORTAC and hold. Continue climb-in-hold to 5000.
--	-------------	---

ATIS 119.525	APP CON 124.875 307.125	TOWER 118.75 290.25	GND CON 123.65 229.8	ASR/PAR
------------------------	-----------------------------------	-------------------------------	--------------------------------	---------



JOGIN I-AEZ 18 RADAR	KIMBO I-AEZ 8.3 RADAR	1200	5000	ART	ELEV 690	TDZE 685
5000	2992	1560	1640			
GS 3.00° TCH 66	3000	4.2 NM	2.7 NM			
CATEGORY	A	B	C	D	E	
S-ILS 3 *	957-1/2		272	(300-1/2)		
S-LOC 3 **	1560-1/2 875 (900-1/2)	1560-3/4 875 (900-3/4)	1560-2 875 (900-2)	1560-2 1/4 875 (900-2 1/4)	1560-2 1/2 875 (900-2 1/2)	
**** CIRCLING	1560-1 1/4 870 (900-1 1/4)	1560-2 1/2 870 (900-2 1/2)	1560-2 3/4 870 (900-2 3/4)	1640-3	950 (1000-3)	
DME MINIMUMS						
S-LOC 3 ***	1080-1/2 395 (400-1/2)	1080-3/4 395 (400-3/4)	1080-1 395 (400-1)			
**** CIRCLING	1200-1 510 (600-1)	1220-1 1/2 530 (600-1 1/2)	1380-2 1/4 690 (700-2 1/4)	1640-3	950 (1000-3)	



FORT DRUM, NEW YORK 44° 03'N-75° 43'W WHEELER-SACK AAF (FORT DRUM) (KGTB)

Amtd 3 23MAR23

ILS or LOC RWY 3

NE-2, 14 MAY 2026 to 11 JUN 2026

NE-2, 14 MAY 2026 to 11 JUN 2026