

BORRN SIX DEPARTURE (RNAV)  
(BORRN6.BORRN) 30NOV23

BAYTOWN, TEXAS  
BAYTOWN (HPY)

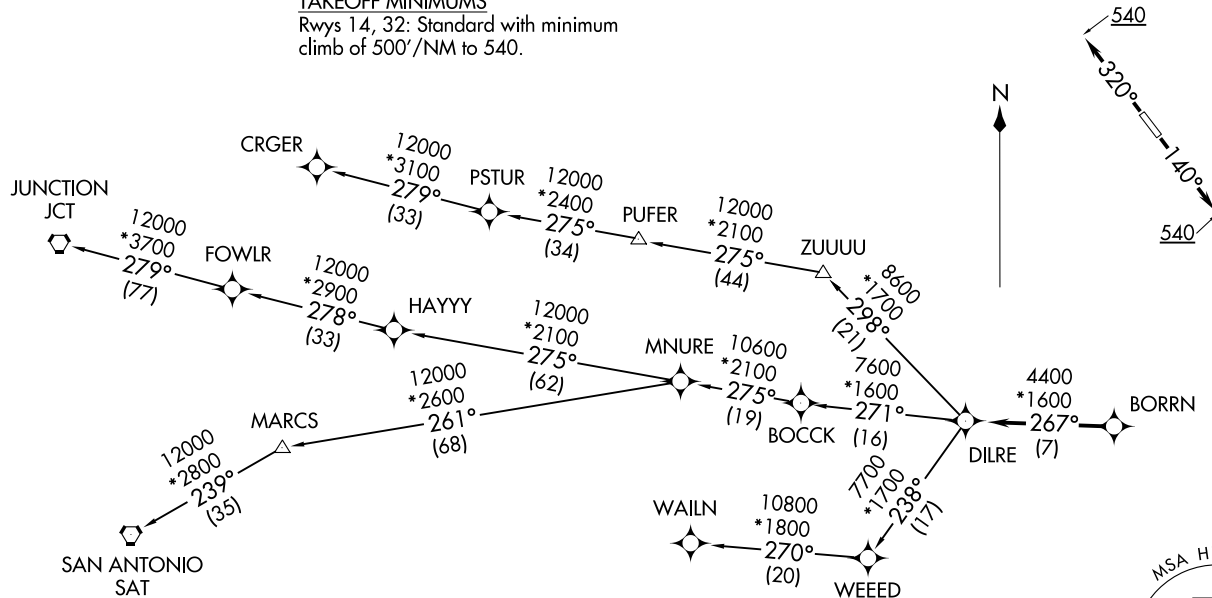
CTAF  
122.8  
HOUSTON DEP CON  
134.45 284.0

RNAV 1 - DME/DME/IRU or GPS.

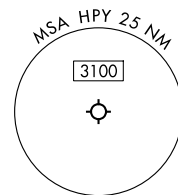
RADAR required.

TOP ALTITUDE:  
ASSIGNED BY ATC

TAKEOFF MINIMUMS  
Rwys 14, 32: Standard with minimum  
climb of 500'/NM to 540.



NOTE: CRGER-TRANSITION ATC assigned only  
for aircraft departing 54T, AXH, EFD, GLS,  
HPY, IWS, LBX, LVJ, SGR, TME, T00, T41.



NOTE: Chart not to scale.

(CONTINUED ON FOLLOWING PAGE)

(BORRN6.BORRN) 25051  
BORRN SIX DEPARTURE (RNAV)

AL-5757 (FAA)

BAYTOWN (HPY)  
BAYTOWN, TEXAS

# BORRN SIX DEPARTURE (RNAV)



## DEPARTURE ROUTE DESCRIPTION

TAKEOFF RUNWAY 14: Climb on heading 140° to 540, for RADAR vectors to BORRN, thence. . . .

TAKEOFF RUNWAY 32: Climb on heading 320° to 540, for RADAR vectors to BORRN, thence. . . .

. . . .on track 267° to DILRE, then on (transition). Maintain ATC assigned altitude. Expect filed altitude 10 minutes after departure.

CRGER TRANSITION (BORRN6.CRGER)

JUNCTION TRANSITION (BORRN6.JCT)

MNURE TRANSITION (BORRN6.MNURE)

SAN ANTONIO TRANSITION (BORRN6.SAT)

WAILN TRANSITION (BORRN6.WAILN)

SC-5, 14 MAY 2026 to 11 JUN 2026

SC-5, 14 MAY 2026 to 11 JUN 2026