

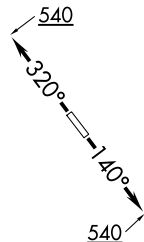
RNAV-1 DME/DME/IRU or GPS.

RADAR required.

TOP ALTITUDE:
ASSIGNED BY ATC

TAKEOFF MINIMUMS

Rwys 14, 32: Standard with minimum climb of 500' per NM to 540.

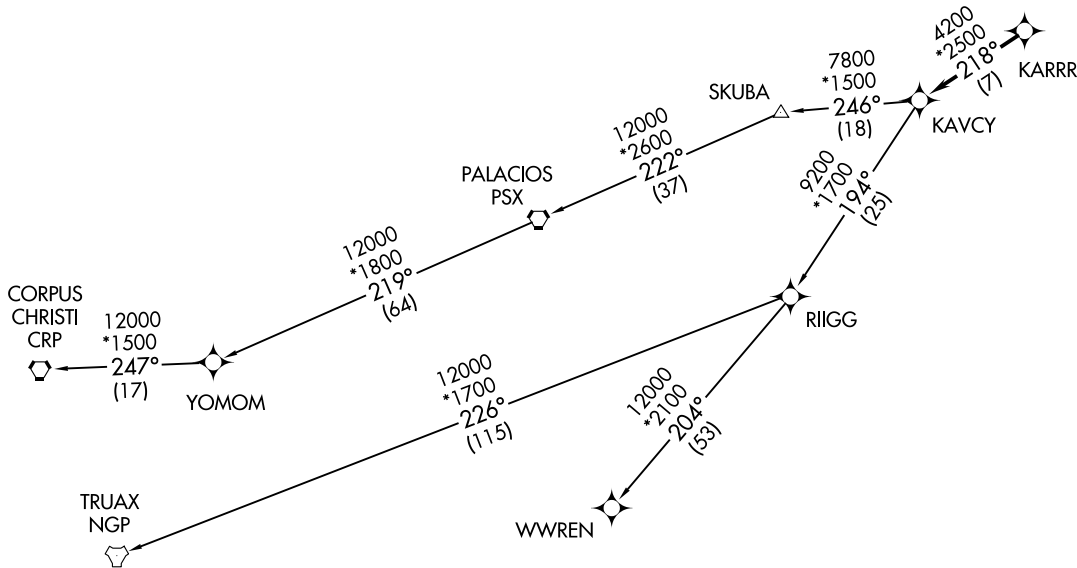


CTAF
122.8
HOUSTON DEP CON
134.45 284.0

KARRR SEVEN DEPARTURE (RNAV)
(KARRR7.KARRR) 29DEC22

(KARRR7.KARRR) 22363
KARRR SEVEN DEPARTURE (RNAV)

AL-5757 (FAA)



(NARRATIVE ON FOLLOWING PAGE)

NOTE: Chart not to scale.

BAYTOWN, TEXAS
BAYTOWN (HPY)

BAYTOWN (HPY)
BAYTOWN, TEXAS

KARRR SEVEN DEPARTURE (RNAV)



DEPARTURE ROUTE DESCRIPTION

TAKEOFF RUNWAY 14: Climb on heading 140° to 540, for RADAR vectors to KARRR, thence . . .

TAKEOFF RUNWAY 32: Climb on heading 320° to 540, for RADAR vectors to KARRR, thence . . .

. . . .on track 218° to KAVCY, then on (transition). Maintain ATC assigned altitude. Expect filed altitude 10 minutes after departure.

CORPUS CHRISTI TRANSITION (KARRR7.CRP)

PALACIOS TRANSITION (KARRR7.PSX)

TRUAX TRANSITION (KARRR7.NGP)

WWREN TRANSITION (KARRR7.WWREN)

YOMOM TRANSITION (KARRR7.YOMOM)

SC-5, 14 MAY 2026 to 11 JUN 2026

SC-5, 14 MAY 2026 to 11 JUN 2026