

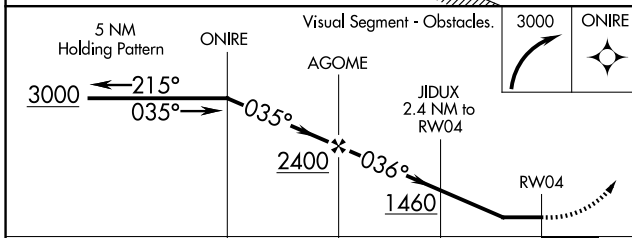
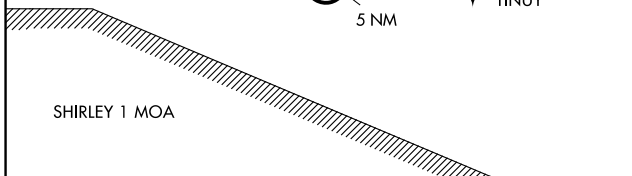
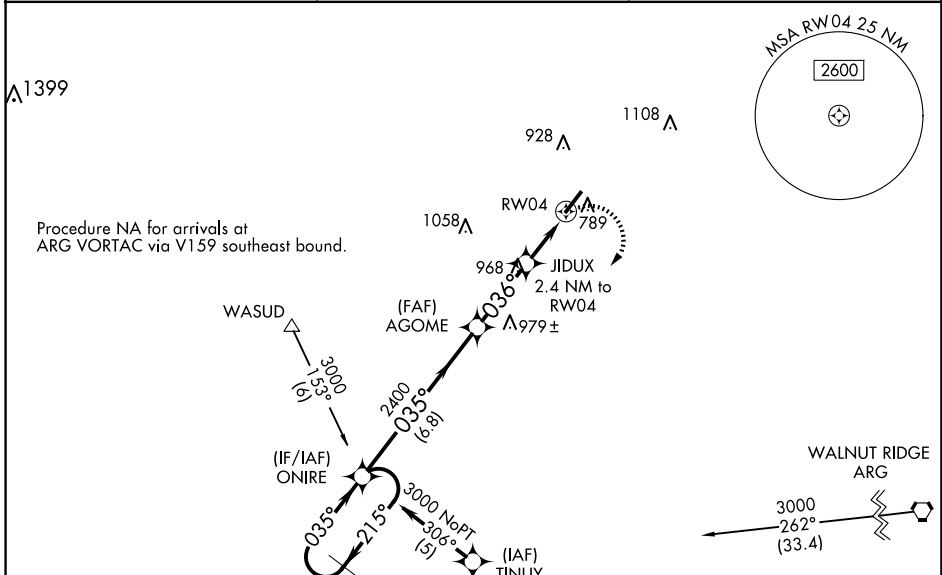
APP CRS	Rwy Idg	<b>5158</b>
<b>036°</b>	TDZE	<b>700</b>
	Apt Elev	<b>717</b>

# RNAV (GPS) RWY 4

SHARP COUNTY RGNL (CVK)

RNP APCH.	<p>Use Walnut Ridge altimeter setting; when not received, use Jonesboro Municipal altimeter setting and increase all MDAs 60 feet and Circling Cat C visibility ¼ SM. Rwy 4 helicopter visibility reduction below 1 SM NA. Straight-in Rwy 4 NA at night, Circling Rwy 4 NA at night.</p>	<p>MISSED APPROACH: Climbing right turn to 3000 direct ONIRE and hold.</p>
<p>▼ Use Walnut Ridge altimeter setting; when not received, use Jonesboro Municipal altimeter setting and increase all MDAs 60 feet and Circling Cat C visibility ¼ SM. Rwy 4 helicopter visibility reduction below 1 SM NA. Straight-in Rwy 4 NA at night, Circling Rwy 4 NA at night.</p>		

ARG AWOS-3PT <b>126.525</b>	MEMPHIS CENTER <b>120.075 289.4</b>	UNICOM <b>122.7 (CTAF)</b>
--------------------------------	--	-------------------------------



ELEV 717	TDZE 700
----------	----------

MIRL Rwy 4-22

0.9% I/P  
5158 x 75

036° to RWY 4

CATEGORY	A	B	C	D
RNAV MDA	1260-1	560 (600-1)	1260-1½ 560 (600-1½)	NA
CIRCLING	1400-1	683 (700-1)	1420-2 703 (800-2)	NA

SC-1, 14 MAY 2026 to 11 JUN 2026

SC-1, 14 MAY 2026 to 11 JUN 2026