

APP CRS	Rwy Ldg	<b>6930</b>
<b>169°</b>	TDZE	<b>32</b>
	Apt Elev	<b>34</b>

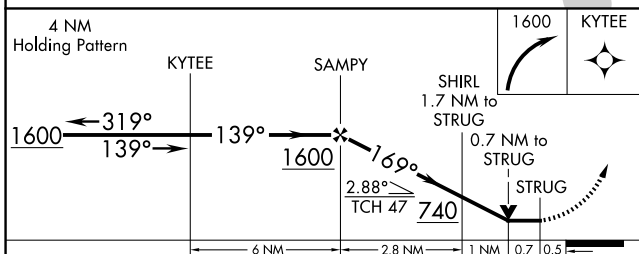
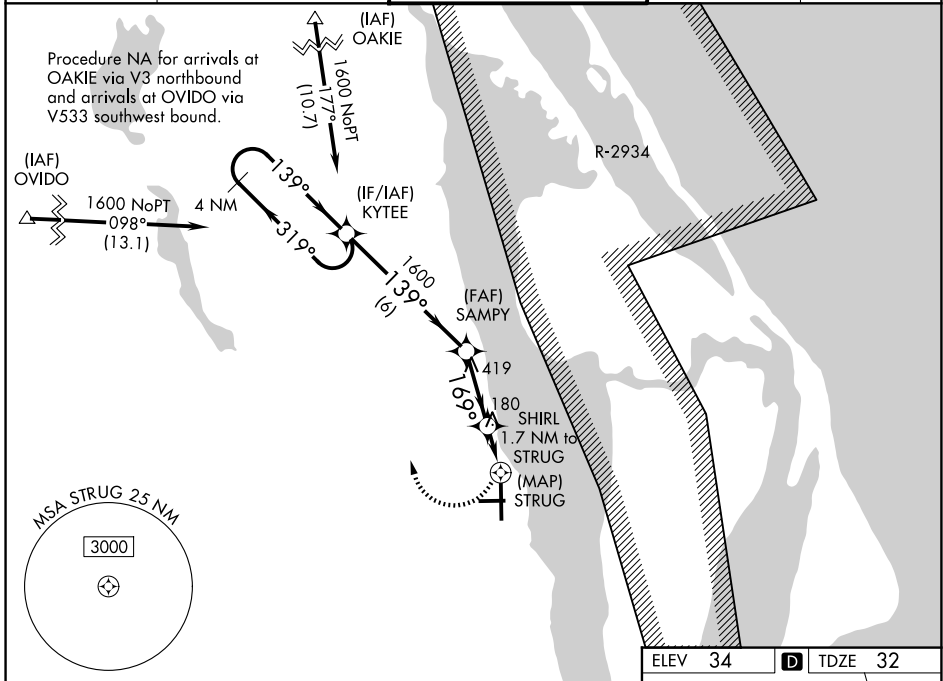
# RNAV (GPS) Y RWY 18

SPACE COAST RGNL (TIX)

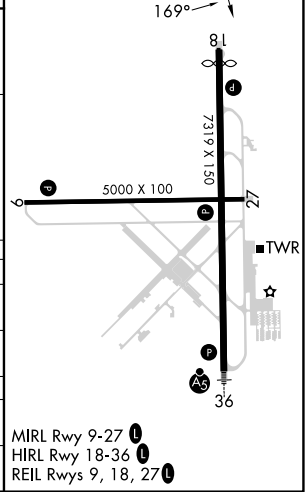
**▽** DME/DME RNP-0.3 NA. Visibility reduction by helicopters NA.  
**▲** When control tower closed, use Melbourne altimeter setting.  
 VDP NA when using Melbourne altimeter setting.

MISSED APPROACH: Climbing right turn to 1600 direct KYTEE and hold.

ATIS <b>120.625</b>	ORLANDO APP CON <b>134.95 281.425</b>	SPACE COAST TOWER * <b>118.9 (CTAF) 0</b>	GND CON <b>121.85</b>	UNICOM <b>122.95</b>
------------------------	--	--	--------------------------	-------------------------



ELEV 34	<b>D</b> TDZE 32
---------	------------------



CATEGORY	A	B	C	D
LNVA MDA	440-1 408 (500-1)	440-1¼ 408 (500-1¼)	440-1¼ 408 (500-1¼)	440-1¼ 408 (500-1¼)
CIRCLING	640-1 606 (700-1)	640-1¾ 606 (700-1¾)	640-2 606 (700-2)	640-2 606 (700-2)
MELBOURNE ALTIMETER SETTING MINIMUMS				
LNVA MDA	500-1 468 (500-1)	500-1¼ 468 (500-1¼)	500-1½ 468 (500-1½)	500-1½ 468 (500-1½)
CIRCLING	700-1 666 (700-1)	700-1¾ 666 (700-1¾)	700-2 666 (700-2)	700-2 666 (700-2)

SE-3, 14 MAY 2026 to 11 JUN 2026

SE-3, 14 MAY 2026 to 11 JUN 2026