

APP CRS <b>271°</b>	Rwy Ldg <b>3556</b>
	TDZE <b>1183</b>
	Apt Elev <b>1190</b>

# RNAV (GPS) RWY 27

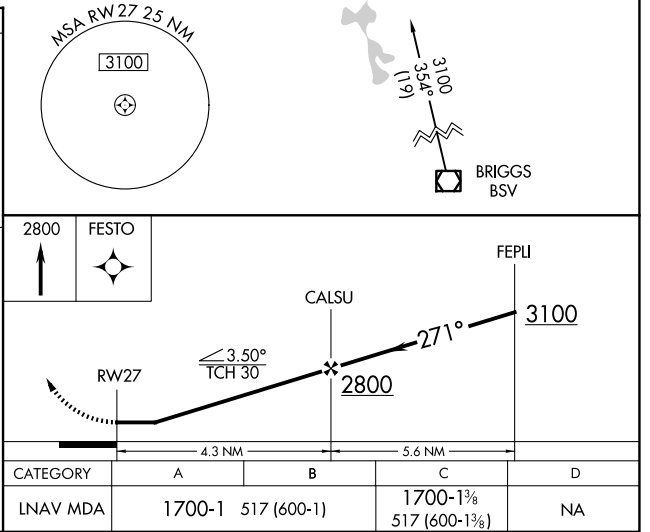
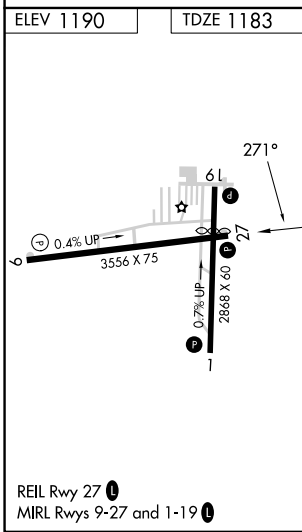
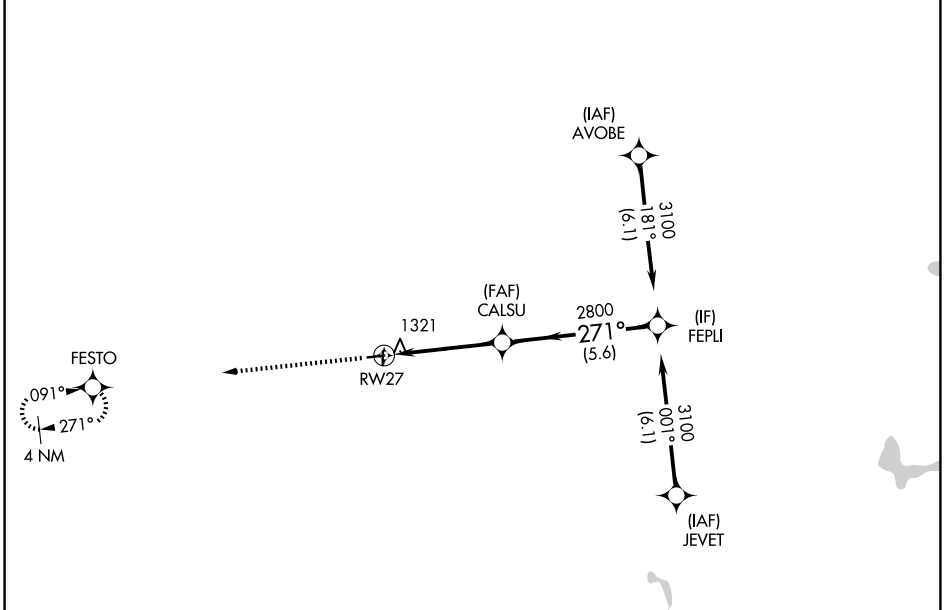
MEDINA MUNI (1G5)

RNP APCH - GPS.

**⚠** Rwy 27 helicopter visibility reduction below 3/4 SM NA.  
Use CLE altimeter setting.

MISSED APPROACH: Climb to 2800 direct FESTO and hold.

CLE ASOS <b>127.85</b>	CLEVELAND APP CON <b>125.35 346.325</b>	UNICOM <b>123.0 (CTAF) 0</b>
---------------------------	--	---------------------------------



EC-2, 14 MAY 2026 to 11 JUN 2026

EC-2, 14 MAY 2026 to 11 JUN 2026