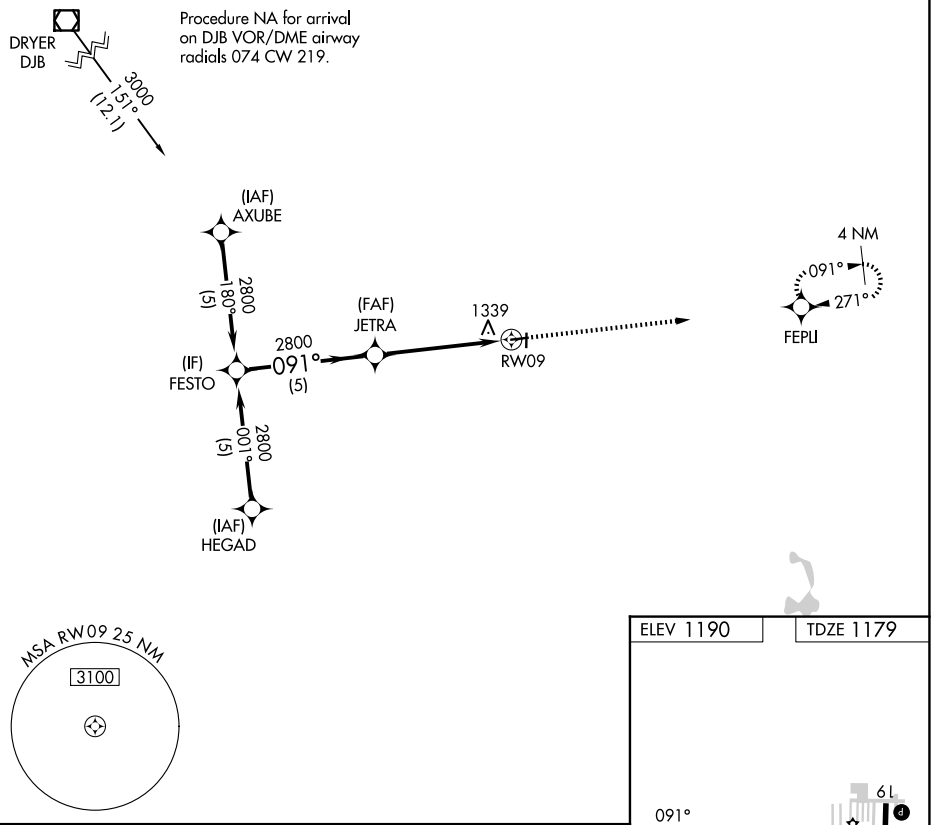


APP CRS 091°	Rwy Ldg TDZE Apt Elev	3556 1179 1190
------------------------	-----------------------------	---

RNAV (GPS) RWY 9

MEDINA MUNI (1G5)

RNP APCH.		MISSED APPROACH: Climb to 2800 direct FEPLI and hold.
▼ ▲ NA	Procedure NA at night. Rwy 9 helicopter visibility reduction below 1 SM NA. Use Cleveland-Hopkins Intl altimeter setting.	
CLE ASOS 127.85	CLEVELAND APP CON 125.35 346.325	UNICOM 123.0 (CTAF) 0



EC-2, 14 MAY 2026 to 11 JUN 2026

EC-2, 14 MAY 2026 to 11 JUN 2026

Visual Segment - Obstacles.		2800	FEPLI	
CATEGORY	A	B	C	D
RNAV MDA	1700-1	521 (600-1)	1700-1½ 521 (600-1½)	NA
REIL Rwy 27 0 MIRL Rwy 9-27 and 1-19 0				