

WAAS CH <b>72732</b> <b>W22A</b>	APP CRS <b>217°</b>	Rwy Ldg TDZE Apt Elev	<b>6497</b> <b>869</b> <b>869</b>
--	------------------------	-----------------------------	---

# RNAV (GPS) RWY 22

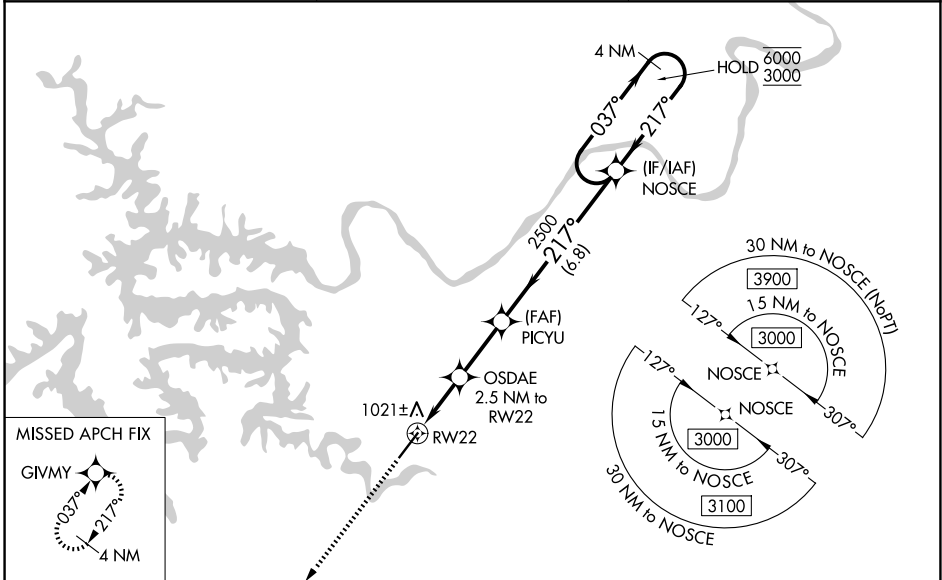
LEE C FINE MEML (AIZ)

RNP APCH - GPS.

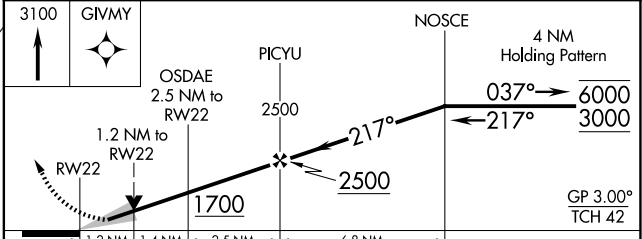
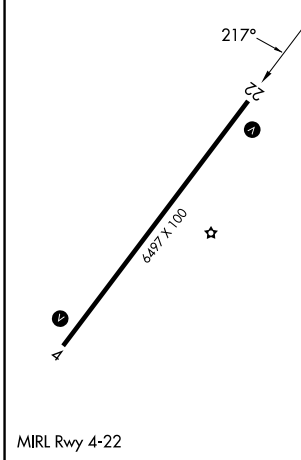
⚠ For uncompensated Baro-VNAV systems, LNAV/VNAV NA below -16°C or above 54°C.  
 ⚠ Rwy 22 helicopter visibility reduction below 1 SM NA. When local altimeter setting not received, use OZS altimeter setting and increase LPV DA to 1168 feet. Increase LNAV/VNAV DA to 1220 feet. Increase all MDAs 60 feet and LNAV visibility Cat C ¼ SM, and Circling visibility Cat C ¼ SM. Baro-VNAV and VDP NA with OZS altimeter setting.

MISSED APPROACH: Climb to 3100 direct GIVMY and hold.

AWOS-3PT <b>135.325</b>	MIZU APP CON <b>124.1 353.925</b>	UNICOM <b>122.8 (CTAF) 0</b>
----------------------------	--------------------------------------	---------------------------------



ELEV 869	TDZE 869
----------	----------



CATEGORY	A	B	C	D
LPV DA		1119-1	250 (300-1)	NA
LNAV/VNAV DA		1171-1	302 (400-1)	NA
LNAV MDA	1280-1	411 (500-1)	1280-1½ 411 (500-1½)	NA
CIRCLING	1340-1 471 (500-1)	1400-1 531 (600-1)	1440-1½ 571 (600-1½)	NA

NC-3, 14 MAY 2026 to 11 JUN 2026

NC-3, 14 MAY 2026 to 11 JUN 2026