

WAAS CH <b>66028</b> <b>W27A</b>	APP CRS <b>274°</b>	Rwy Ldg TDZE Apt Elev	<b>3882</b> <b>777</b> <b>781</b>
--	------------------------	-----------------------------	---

# RNAV (GPS) RWY 27

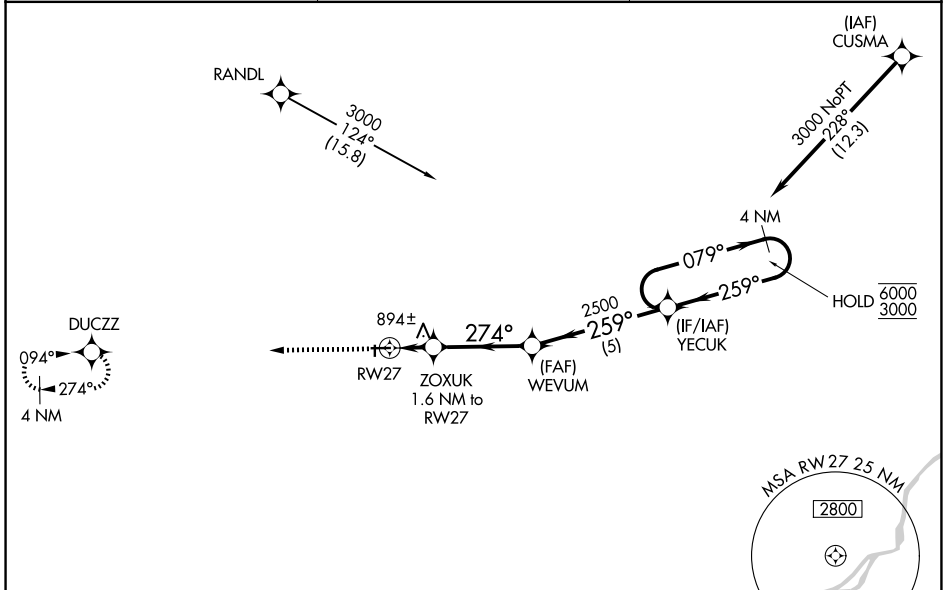
FULTON COUNTY (USE)

RNP APCH - GPS.

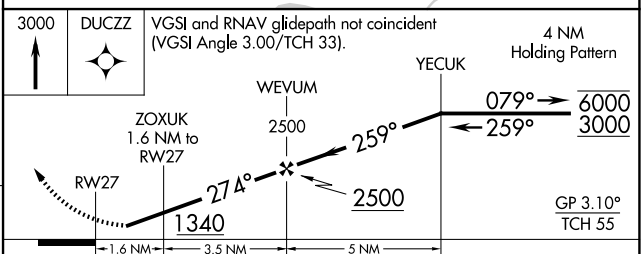
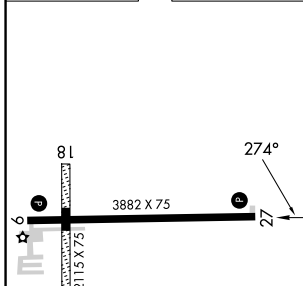
**⚠** Rwy 27 helicopter visibility reduction below 3/4 SM NA.  
**⚠** Circling NA to Rwy 18 and 36.  
 For uncompensated Baro-VNAV systems, LNAV/VNAV NA below -16°C or above 54°C.  
 Circling Rwy 9 NA at night.

MISSED APPROACH:  
 Climb to 3000 direct  
 DUCZZ and hold.

AWOS-3P <b>127.375</b>	TOLEDO APP CON <b>134.35 317.55</b>	UNICOM <b>123.0 (CTAF)</b>
---------------------------	--	-------------------------------



ELEV <b>781</b>	TDZE <b>777</b>
-----------------	-----------------



CATEGORY	A	B	C	D
LPV DA		1092-1	315 (400-1)	
LNAV/VNAV DA		1095-1	318 (400-1)	
LNAV MDA	1180-1	403 (400-1)	1180-1½	403 (400-1½)
CIRCLING	1280-1	499 (500-1)	1480-2 699 (700-2)	1480-2¼ 699 (700-2¼)

REIL Rwy 9 and 27 **Ⓛ**  
 MIRL Rwy 9-27 **Ⓛ**

EC-2, 14 MAY 2026 to 11 JUN 2026

EC-2, 14 MAY 2026 to 11 JUN 2026