

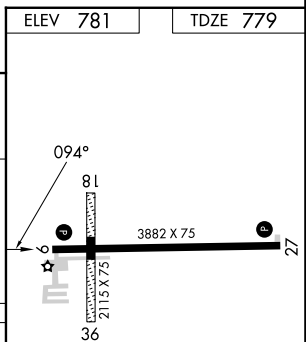
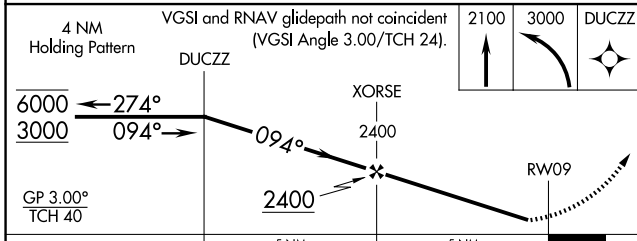
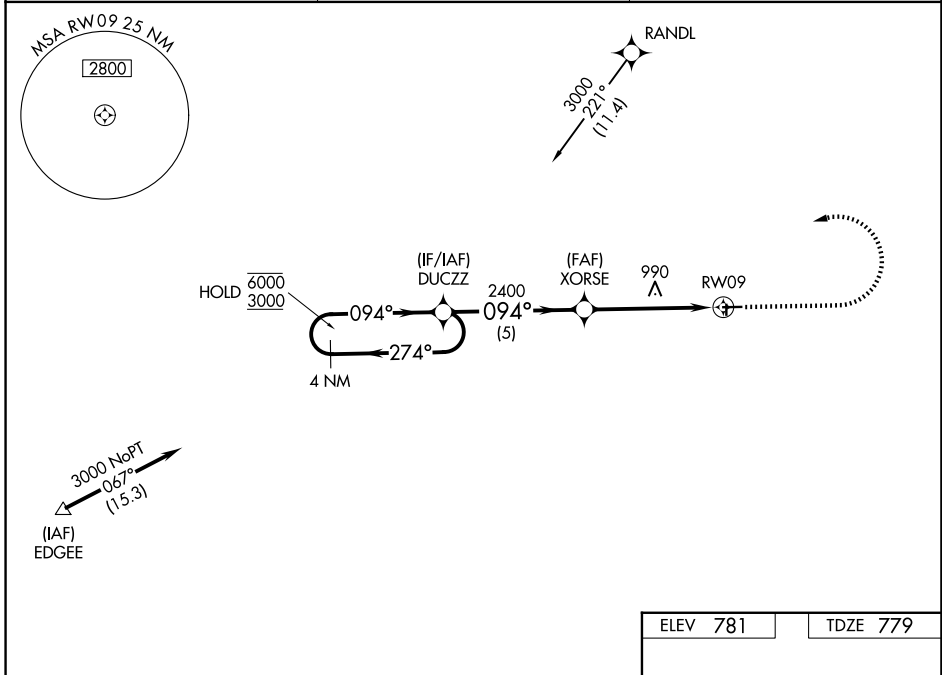
WAAS CH 93828 W09A	APP CRS 094°	Rwy Ldg 3882 TDZE 779 Apt Elev 781
--	------------------------	---

RNAV (GPS) RWY 9

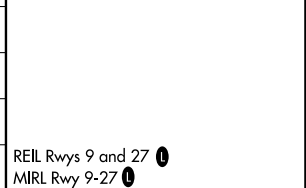
FULTON COUNTY (USE)

RNP APCH - GPS.	<p>▽ Rwy 9 helicopter visibility reduction below 1 SM NA. Circling NA to Rwys 18 and 36. For uncompensated Baro-VNAV systems, LNAV/VNAV NA below -16°C or above 54°C. Procedure NA at night.</p> <p>▲ MISSED APPROACH: Climb to 2100 then climbing left turn to 3000 direct DUCZZ and hold.</p>
-----------------	---

AWOS-3P 127.375	TOLEDO APP CON 134.35 317.55	UNICOM 123.0 (CTAF) 0
---------------------------	--	---------------------------------



CATEGORY	A	B	C	D
LPV DA	1108-1		329 (400-1)	
LNAV/VNAV DA	1185-1½		406 (500-1½)	
LNAV MDA	1240-1	461 (500-1)	1240-1¾	461 (500-1¾)
CIRCLING	1280-1	499 (500-1)	1480-2	1480-2¼
			699 (700-2)	699 (700-2¼)



EC-2, 14 MAY 2026 to 11 JUN 2026

EC-2, 14 MAY 2026 to 11 JUN 2026