

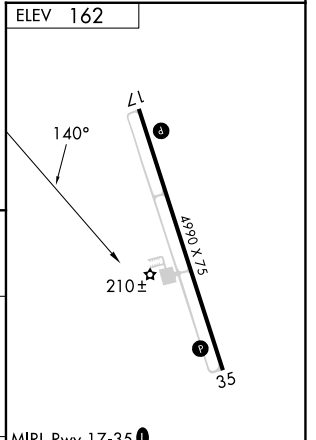
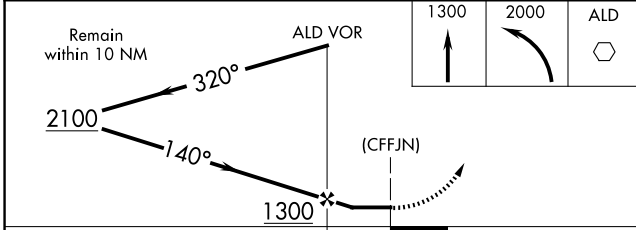
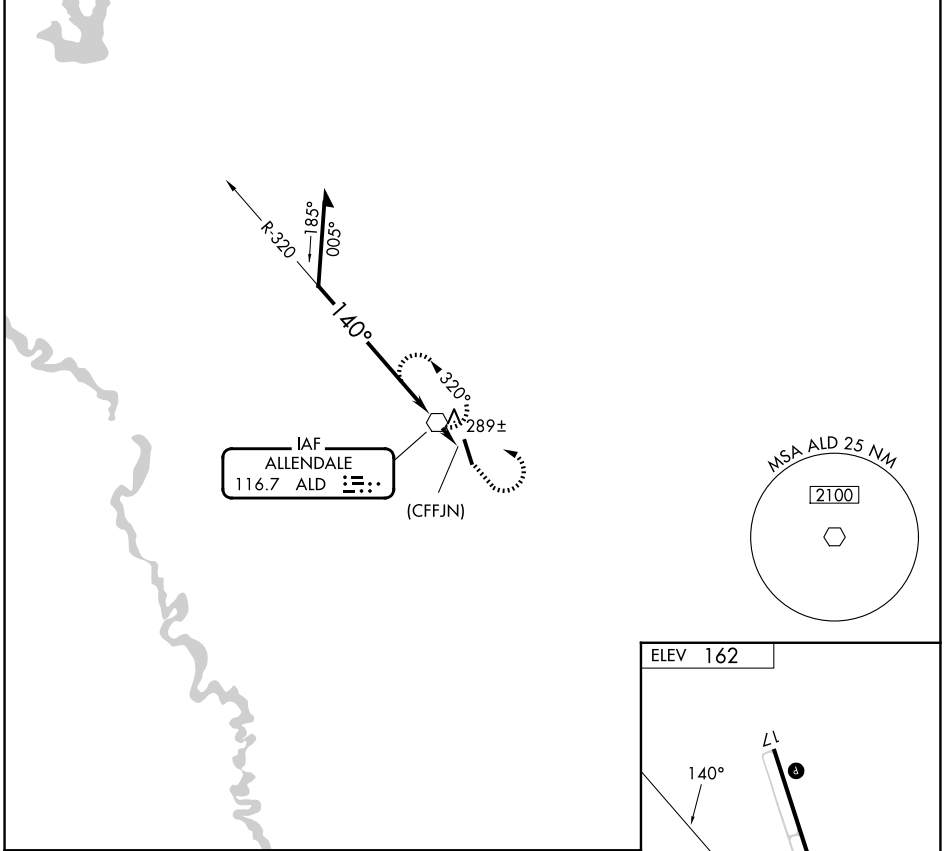
VOR ALD 116.7	APP CRS 140°	Rwy Ldg TDZE Apt Elev	N/A N/A 162
-------------------------	------------------------	-----------------------------	--

VOR-A
ALLEDALE COUNTY (A.Q.X)

⚠ When local altimeter setting not received, use Augusta Rgnl at Bush Fld altimeter setting.

⚠ MISSED APPROACH: Climb to 1300, then climbing left turn to 2000 direct ALD VOR and hold.

AWOS-3PT 118.95	JACKSONVILLE CENTER 132.925 363.2	UNICOM 122.8 (CTAF) 0
---------------------------	---	---------------------------------



CATEGORY	A	B	C	D	FAF to MAP 1.1 NM					
CIRCLING	860-1	698 (700-1)	NA		Knots	60	90	120	150	180
					Min:Sec	1:06	0:44	0:33	0:26	0:22

SE-2, 14 MAY 2026 to 11 JUN 2026

SE-2, 14 MAY 2026 to 11 JUN 2026