

WAAS CH 42912 W19A	APP CRS 189°	Rwy Idg TDZE Apt Elev	5002 467 473
--	------------------------	-----------------------------	---

RNAV (GPS) RWY 19

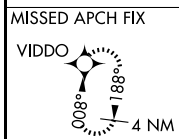
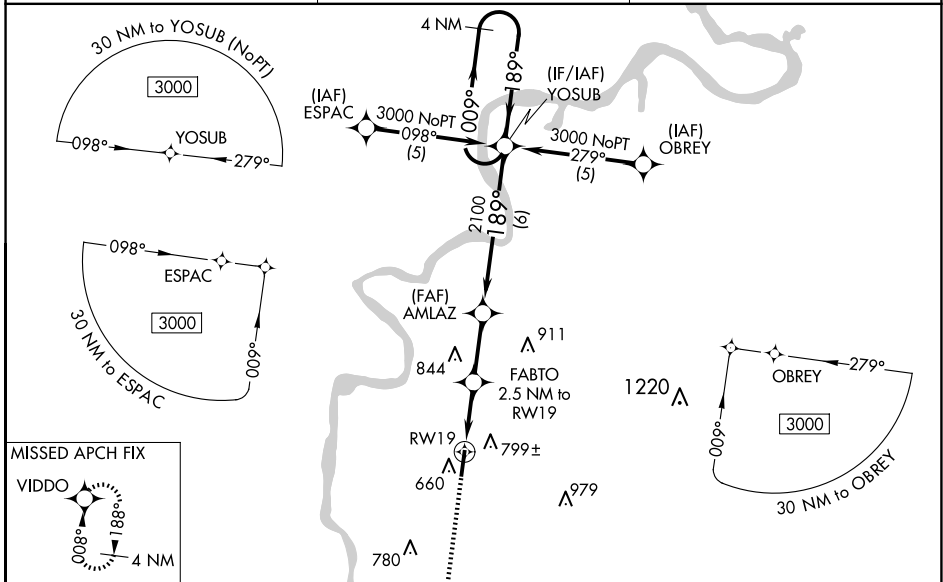
SAVANNAH-HARDIN COUNTY (SNH)

RNP APCH - GPS.

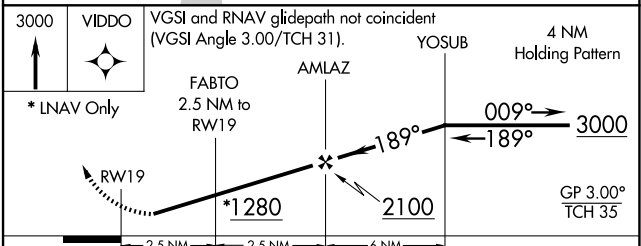
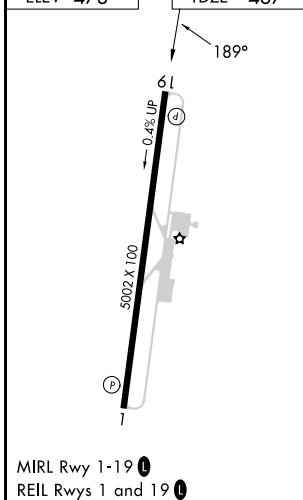
Baro-VNAV NA when using Muscle Shoals altimeter setting. For uncompensated Baro-VNAV systems, LNAV/VNAV NA below -15°C or above 54°C. When local altimeter setting not received use Muscle Shoals, AL altimeter setting: increase LPV DA to 976 feet and all visibilities ½ SM; increase LNAV/VNAV DA to 1102 feet and all visibilities ¼ SM; increase all MDA 120 feet and visibility LNAV and Circling Cat C ½ SM. Circling Rwy 1 NA at night.

MISSED APPROACH:
Climb to 3000 direct VIDDO and hold.

AWOS-3 133.925	MEMPHIS CENTER 124.35 318.1	CTAF 122.8
--------------------------	---------------------------------------	----------------------



ELEV 473	TDZE 467
----------	----------



CATEGORY	A	B	C	D
LPV DA	873-1½		406 (400-1½)	NA
LNAV/VNAV DA	999-2		532 (600-2)	NA
LNAV MDA	1060-1	593 (600-1)	1060-1½ 593 (600-1½)	NA
CIRCLING	1100-1	627 (700-1)	1140-1¾ 667 (700-1¾)	NA

SE-1, 14 MAY 2026 to 11 JUN 2026

SE-1, 14 MAY 2026 to 11 JUN 2026